

CYB5D1 Antibody (Center)
Affinity Purified Rabbit Polyclonal Antibody (Pab)
Catalog # AP17685C**Specification**

CYB5D1 Antibody (Center) - Product Information

Application	WB,E
Primary Accession	Q6P9G0
Other Accession	NP_653208.2
Reactivity	Human
Host	Rabbit
Clonality	Polyclonal
Isotype	Rabbit IgG
Calculated MW	26689
Antigen Region	59-86

CYB5D1 Antibody (Center) - Additional Information**Gene ID** 124637**Other Names**

Cytochrome b5 domain-containing protein 1, CYB5D1

Target/Specificity

This CYB5D1 antibody is generated from rabbits immunized with a KLH conjugated synthetic peptide between 59-86 amino acids from the Central region of human CYB5D1.

Dilution

WB~~1:1000

E~~Use at an assay dependent concentration.

Format

Purified polyclonal antibody supplied in PBS with 0.09% (W/V) sodium azide. This antibody is purified through a protein A column, followed by peptide affinity purification.

Storage

Maintain refrigerated at 2-8°C for up to 2 weeks. For long term storage store at -20°C in small aliquots to prevent freeze-thaw cycles.

Precautions

CYB5D1 Antibody (Center) is for research use only and not for use in diagnostic or therapeutic procedures.

CYB5D1 Antibody (Center) - Protein Information**Name** CYB5D1 ([HGNC:26516](#))**Function** Radial spoke stalk protein that binds heme under oxidizing conditions. Required for the

coordinated beating of multiple cilia maybe by functioning in a redox signaling pathway.

Cellular Location

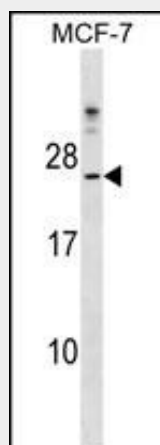
Cytoplasm, cytoskeleton, cilium axoneme {ECO:0000250|UniProtKB:Q56719}. Note=Localizes to the radial spoke stalk. {ECO:0000250|UniProtKB:Q56719}

CYB5D1 Antibody (Center) - Protocols

Provided below are standard protocols that you may find useful for product applications.

- [Western Blot](#)
- [Blocking Peptides](#)
- [Dot Blot](#)
- [Immunohistochemistry](#)
- [Immunofluorescence](#)
- [Immunoprecipitation](#)
- [Flow Cytometry](#)
- [Cell Culture](#)

CYB5D1 Antibody (Center) - Images



CYB5D1 Antibody (Center) (Cat. #AP17685c) western blot analysis in MCF-7 cell line lysates (35ug/lane). This demonstrates the CYB5D1 antibody detected the CYB5D1 protein (arrow).

CYB5D1 Antibody (Center) - Background

CYB5D1 belongs to the cytochrome b5 family and contains 1 cytochrome b5 heme-binding domain. Cytochromes b5 are ubiquitous electron transport proteins found in animals, plants and yeasts. There are 2 named isoforms produced by alternative splicing.

CYB5D1 Antibody (Center) - References

Ota, T., et al. Nat. Genet. 36(1):40-45(2004)