

**LARP1B Antibody (C-term)**  
**Affinity Purified Rabbit Polyclonal Antibody (Pab)**  
**Catalog # AP17692b**

**Specification**

---

**LARP1B Antibody (C-term) - Product Information**

Application	WB,E
Primary Accession	<a href="#">Q659C4</a>
Other Accession	<a href="#">NP_060548.2</a>
Reactivity	Human
Host	Rabbit
Clonality	Polyclonal
Isotype	Rabbit IgG
Calculated MW	105322
Antigen Region	832-859

**LARP1B Antibody (C-term) - Additional Information**

**Gene ID** 55132

**Other Names**

La-related protein 1B, La ribonucleoprotein domain family member 1B, La ribonucleoprotein domain family member 2, La-related protein 2, LARP1B, LARP2

**Target/Specificity**

This LARP1B antibody is generated from rabbits immunized with a KLH conjugated synthetic peptide between 832-859 amino acids from the C-terminal region of human LARP1B.

**Dilution**

WB~~1:1000

E~~Use at an assay dependent concentration.

**Format**

Purified polyclonal antibody supplied in PBS with 0.09% (W/V) sodium azide. This antibody is purified through a protein A column, followed by peptide affinity purification.

**Storage**

Maintain refrigerated at 2-8°C for up to 2 weeks. For long term storage store at -20°C in small aliquots to prevent freeze-thaw cycles.

**Precautions**

LARP1B Antibody (C-term) is for research use only and not for use in diagnostic or therapeutic procedures.

**LARP1B Antibody (C-term) - Protein Information**

**Name** LARP1B

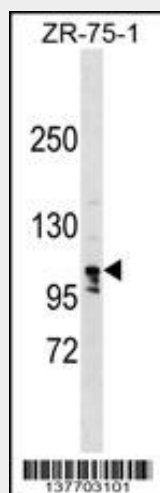
## Synonyms LARP2

### LARP1B Antibody (C-term) - Protocols

Provided below are standard protocols that you may find useful for product applications.

- [Western Blot](#)
- [Blocking Peptides](#)
- [Dot Blot](#)
- [Immunohistochemistry](#)
- [Immunofluorescence](#)
- [Immunoprecipitation](#)
- [Flow Cytometry](#)
- [Cell Culture](#)

### LARP1B Antibody (C-term) - Images



LARP1B Antibody (C-term) (Cat. #AP17692b) western blot analysis in ZR-75-1 cell line lysates (35ug/lane). This demonstrates the LARP1B antibody detected the LARP1B protein (arrow).

### LARP1B Antibody (C-term) - Background

This gene encodes a protein containing domains found in the La related protein of *Drosophila melanogaster*. La motif-containing proteins are thought to be RNA-binding proteins, where the La motif and adjacent amino acids fold into an RNA recognition motif. The La motif is also found in proteins unrelated to the La protein. Alternative splicing has been observed at this locus and three variants, encoding distinct isoforms, are described. Additional splice variation has been identified but the full-length nature of these transcripts has not been determined.

### LARP1B Antibody (C-term) - References

Wolin, S.L., et al. Annu. Rev. Biochem. 71, 375-403 (2002) :