

LASS6 Antibody (C-term)
Affinity Purified Rabbit Polyclonal Antibody (Pab)
Catalog # AP17693b

Specification

LASS6 Antibody (C-term) - Product Information

Application	WB,E
Primary Accession	Q6ZMG9
Other Accession	NP_982288.1
Reactivity	Human
Host	Rabbit
Clonality	Polyclonal
Isotype	Rabbit IgG
Calculated MW	44890
Antigen Region	335-361

LASS6 Antibody (C-term) - Additional Information

Gene ID 253782

Other Names

Ceramide synthase 6, CerS6, LAG1 longevity assurance homolog 6, CERS6, LASS6

Target/Specificity

This LASS6 antibody is generated from rabbits immunized with a KLH conjugated synthetic peptide between 335-361 amino acids from the C-terminal region of human LASS6.

Dilution

WB~~1:1000

E~~Use at an assay dependent concentration.

Format

Purified polyclonal antibody supplied in PBS with 0.09% (W/V) sodium azide. This antibody is purified through a protein A column, followed by peptide affinity purification.

Storage

Maintain refrigerated at 2-8°C for up to 2 weeks. For long term storage store at -20°C in small aliquots to prevent freeze-thaw cycles.

Precautions

LASS6 Antibody (C-term) is for research use only and not for use in diagnostic or therapeutic procedures.

LASS6 Antibody (C-term) - Protein Information

Name CERS6 ([HGNC:23826](#))

Function Ceramide synthase that catalyzes the transfer of the acyl chain from acyl-CoA to a

sphingoid base, with high selectivity toward palmitoyl-CoA (hexadecanoyl-CoA; C16:0-CoA) (PubMed:[17609214](#), PubMed:[17977534](#), PubMed:[23530041](#), PubMed:[26887952](#), PubMed:[31916624](#)). Can use other acyl donors, but with less efficiency (By similarity). N- acylates sphinganine and sphingosine bases to form dihydroceramides and ceramides in de novo synthesis and salvage pathways, respectively (PubMed:[17977534](#), PubMed:[23530041](#), PubMed:[26887952](#), PubMed:[31916624](#)). Ceramides generated by CERS6 play a role in inflammatory response (By similarity). Acts as a regulator of metabolism and hepatic lipid accumulation (By similarity). Under high fat diet, palmitoyl- (C16:0-) ceramides generated by CERS6 specifically bind the mitochondrial fission factor MFF, thereby promoting mitochondrial fragmentation and contributing to the development of obesity (By similarity).

Cellular Location

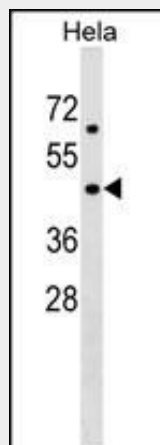
Endoplasmic reticulum membrane {ECO:0000250|UniProtKB:Q8C172}; Multi-pass membrane protein {ECO:0000250|UniProtKB:Q8C172}

LASS6 Antibody (C-term) - Protocols

Provided below are standard protocols that you may find useful for product applications.

- [Western Blot](#)
- [Blocking Peptides](#)
- [Dot Blot](#)
- [Immunohistochemistry](#)
- [Immunofluorescence](#)
- [Immunoprecipitation](#)
- [Flow Cytometry](#)
- [Cell Culture](#)

LASS6 Antibody (C-term) - Images



LASS6 Antibody (C-term) (Cat. #AP17693b) western blot analysis in HeLa cell line lysates (35ug/lane). This demonstrates the LASS6 antibody detected the LASS6 protein (arrow).

LASS6 Antibody (C-term) - Background

LASS6 may be involved in sphingolipid synthesis or its regulation (By similarity).

LASS6 Antibody (C-term) - References

Mesicek, J., et al. Cell. Signal. 22(9):1300-1307(2010)

Rose, J.E., et al. Mol. Med. 16 (7-8), 247-253 (2010) :

Yacoub, A., et al. Cancer Res. 70(3):1120-1129(2010)

Erez-Roman, R., et al. Biochem. Biophys. Res. Commun. 391(1):219-223(2010)

Senkal, C.E., et al. FASEB J. 24(1):296-308(2010)

LASS6 Antibody (C-term) - Citations

- [γ-Tocotrienol induces apoptosis in pancreatic cancer cells by upregulation of ceramide synthesis and modulation of sphingolipid transport.](#)