

**NKX3-2 Antibody (Center)**  
**Affinity Purified Rabbit Polyclonal Antibody (Pab)**  
**Catalog # AP17702c**

**Specification**

---

**NKX3-2 Antibody (Center) - Product Information**

Application	WB,E
Primary Accession	<a href="#">P78367</a>
Other Accession	<a href="#">P70061</a> , <a href="#">P97503</a> , <a href="#">NP_001180.1</a>
Reactivity	Human
Predicted	Mouse, Xenopus
Host	Rabbit
Clonality	Polyclonal
Isotype	Rabbit IgG
Calculated MW	34814
Antigen Region	3-2

**NKX3-2 Antibody (Center) - Additional Information**

**Gene ID** 579

**Other Names**

Homeobox protein Nkx-32, Bagpipe homeobox protein homolog 1, Homeobox protein NK-3 homolog B, NKX3-2, BAPX1, NKX3B

**Target/Specificity**

This NKX3-2 antibody is generated from rabbits immunized with a KLH conjugated synthetic peptide between 208-235 amino acids from the Central region of human NKX3-2.

**Dilution**

WB~~1:1000

E~~Use at an assay dependent concentration.

**Format**

Purified polyclonal antibody supplied in PBS with 0.09% (W/V) sodium azide. This antibody is purified through a protein A column, followed by peptide affinity purification.

**Storage**

Maintain refrigerated at 2-8°C for up to 2 weeks. For long term storage store at -20°C in small aliquots to prevent freeze-thaw cycles.

**Precautions**

NKX3-2 Antibody (Center) is for research use only and not for use in diagnostic or therapeutic procedures.

**NKX3-2 Antibody (Center) - Protein Information**

**Name** NKX3-2

**Synonyms** BAPX1, NKX3B

**Function** Transcriptional repressor that acts as a negative regulator of chondrocyte maturation. Plays a role in distal stomach development; required for proper antral-pyloric morphogenesis and development of antral-type epithelium. In concert with GSC, defines the structural components of the middle ear; required for tympanic ring and gonium development and in the regulation of the width of the malleus (By similarity).

**Cellular Location**

Nucleus.

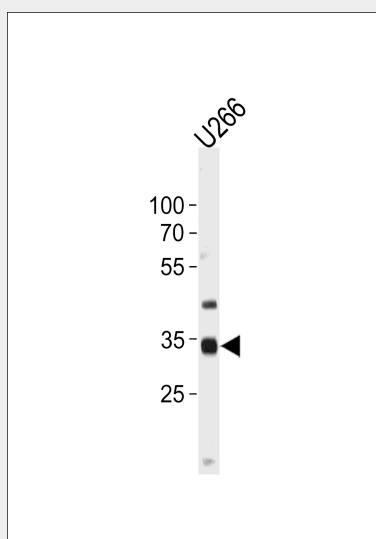
**Tissue Location**

Expressed at highest levels in cartilage, bone (osteosarcoma) and gut (small intestine and colon), whereas moderate expression is seen in trachea and brain. Expressed in visceral mesoderm and embryonic skeleton.

**NKX3-2 Antibody (Center) - Protocols**

Provided below are standard protocols that you may find useful for product applications.

- [Western Blot](#)
- [Blocking Peptides](#)
- [Dot Blot](#)
- [Immunohistochemistry](#)
- [Immunofluorescence](#)
- [Immunoprecipitation](#)
- [Flow Cytometry](#)
- [Cell Culture](#)

**NKX3-2 Antibody (Center) - Images**

NKX3-2 Antibody (Center) (Cat. #AP17702c) western blot analysis in U266 cell line lysates (35ug/lane). This demonstrates the NKX3-2 antibody detected the NKX3-2 protein (arrow).

**NKX3-2 Antibody (Center) - Background**

This gene encodes a member of the NK family of

homeobox-containing proteins. The encoded protein may play a role in skeletal development.

#### **NKX3-2 Antibody (Center) - References**

Hellemans, J., et al. Am. J. Hum. Genet. 85(6):916-922(2009)

Rodrigo, I., et al. Mol. Cell. Biol. 24(7):2757-2766(2004)

Tribioli, C., et al. Gene 203(2):225-233(1997)

Yoshiura, K.I., et al. Genomics 45(2):425-428(1997)

Tribioli, C., et al. Mech. Dev. 65 (1-2), 145-162 (1997) :