

**TMED1 Antibody (Center)**  
**Affinity Purified Rabbit Polyclonal Antibody (Pab)**  
**Catalog # AP17714c****Specification**

---

**TMED1 Antibody (Center) - Product Information**

Application	WB,E
Primary Accession	<a href="#">Q13445</a>
Other Accession	<a href="#">Q2TBK5</a> , <a href="#">NP_006849.1</a>
Reactivity	Human
Predicted	Bovine
Host	Rabbit
Clonality	Polyclonal
Isotype	Rabbit IgG
Calculated MW	25206
Antigen Region	77-104

**TMED1 Antibody (Center) - Additional Information****Gene ID** 11018**Other Names**

Transmembrane emp24 domain-containing protein 1, Interleukin-1 receptor-like 1 ligand, Putative T1/ST2 receptor-binding protein, p24 family protein gamma-1, Tp24, p24gamma1, TMED1, IL1RL1L, IL1RL1LG

**Target/Specificity**

This TMED1 antibody is generated from rabbits immunized with a KLH conjugated synthetic peptide between 77-104 amino acids from the Central region of human TMED1.

**Dilution**

WB~~1:1000

E~~Use at an assay dependent concentration.

**Format**

Purified polyclonal antibody supplied in PBS with 0.09% (W/V) sodium azide. This antibody is purified through a protein A column, followed by peptide affinity purification.

**Storage**

Maintain refrigerated at 2-8°C for up to 2 weeks. For long term storage store at -20°C in small aliquots to prevent freeze-thaw cycles.

**Precautions**

TMED1 Antibody (Center) is for research use only and not for use in diagnostic or therapeutic procedures.

**TMED1 Antibody (Center) - Protein Information**

**Name** TMED1**Synonyms** IL1RL1L, IL1RL1LG

**Function** Potential role in vesicular protein trafficking, mainly in the early secretory pathway. May act as a cargo receptor at the luminal side for incorporation of secretory cargo molecules into transport vesicles and may be involved in vesicle coat formation at the cytoplasmic side. Plays a positive role in IL-33-mediated IL-8 and IL-6 production by interacting with interleukin-33 receptor IL1RL1 (PubMed:[23319592](#)). Also plays a role in the modulation of innate immune signaling through the cGAS-STING pathway by interacting with RNF26 (PubMed:[32614325](#)).

**Cellular Location**

Cell membrane; Single-pass type I membrane protein. Endoplasmic reticulum membrane; Single-pass type I membrane protein. Golgi apparatus, cis-Golgi network membrane; Single-pass type I membrane protein. Endoplasmic reticulum-Golgi intermediate compartment membrane; Single-pass type I membrane protein

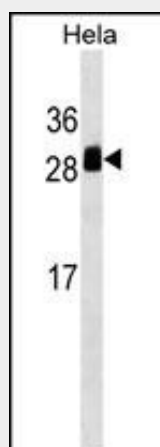
**Tissue Location**

Widely expressed..

**TMED1 Antibody (Center) - Protocols**

Provided below are standard protocols that you may find useful for product applications.

- [Western Blot](#)
- [Blocking Peptides](#)
- [Dot Blot](#)
- [Immunohistochemistry](#)
- [Immunofluorescence](#)
- [Immunoprecipitation](#)
- [Flow Cytometry](#)
- [Cell Culture](#)

**TMED1 Antibody (Center) - Images**

TMED1 Antibody (Center) (Cat. #AP17714c) western blot analysis in HeLa cell line lysates (35ug/lane). This demonstrates the TMED1 antibody detected the TMED1 protein (arrow).

**TMED1 Antibody (Center) - Background**

The protein encoded by this gene was identified by its interaction with interleukin 1 receptor-like 1 (IL1RL1). This protein lacks any similarity to other interleukin 1 ligands. The functional significance of its interaction with IL1RL1 is not known.

#### **TMED1 Antibody (Center) - References**

Tare, N., et al. Exp. Cell Res. 316(15):2527-2537(2010)  
Colland, F., et al. Genome Res. 14(7):1324-1332(2004)  
Grimwood, J., et al. Nature 428(6982):529-535(2004)  
Gayle, M.A., et al. J. Biol. Chem. 271(10):5784-5789(1996)