

WBP2NL Antibody (N-term)
Affinity Purified Rabbit Polyclonal Antibody (Pab)
Catalog # AP17717a**Specification**

WBP2NL Antibody (N-term) - Product Information

Application	WB,E
Primary Accession	Q6ICG8
Other Accession	NP_689826.2
Reactivity	Human
Host	Rabbit
Clonality	Polyclonal
Isotype	Rabbit IgG
Antigen Region	9-36

WBP2NL Antibody (N-term) - Additional Information**Gene ID** 164684**Other Names**

Postacrosomal sheath WW domain-binding protein, WW domain-binding protein 2-like, WBP2NL, PAWP

Target/Specificity

This WBP2NL antibody is generated from rabbits immunized with a KLH conjugated synthetic peptide between 9-36 amino acids from the N-terminal region of human WBP2NL.

Dilution

WB~~1:1000

E~~Use at an assay dependent concentration.

Format

Purified polyclonal antibody supplied in PBS with 0.09% (W/V) sodium azide. This antibody is purified through a protein A column, followed by peptide affinity purification.

Storage

Maintain refrigerated at 2-8°C for up to 2 weeks. For long term storage store at -20°C in small aliquots to prevent freeze-thaw cycles.

Precautions

WBP2NL Antibody (N-term) is for research use only and not for use in diagnostic or therapeutic procedures.

WBP2NL Antibody (N-term) - Protein Information**Name** WBP2NL**Synonyms** PAWP

Function May play a role in meiotic resumption and pronuclear formation, mediated by a WW domain-signaling pathway during fertilization.

Tissue Location

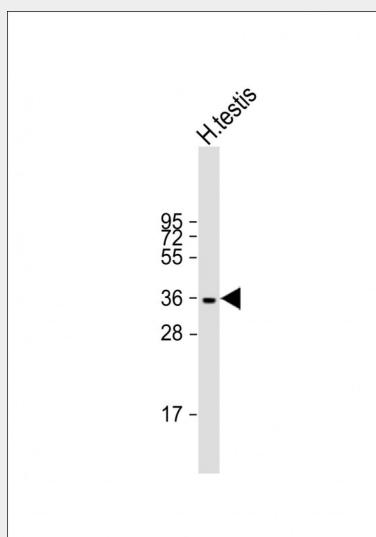
Expressed in testis..

WBP2NL Antibody (N-term) - Protocols

Provided below are standard protocols that you may find useful for product applications.

- [Western Blot](#)
- [Blocking Peptides](#)
- [Dot Blot](#)
- [Immunohistochemistry](#)
- [Immunofluorescence](#)
- [Immunoprecipitation](#)
- [Flow Cytometry](#)
- [Cell Culture](#)

WBP2NL Antibody (N-term) - Images



Anti-WBP2NL Antibody (N-term) at 1:1000 dilution + human testis lysate Lysates/proteins at 20 µg per lane. Secondary Goat Anti-Rabbit IgG, (H+L), Peroxidase conjugated at 1/10000 dilution. Predicted band size : 32 kDa Blocking/Dilution buffer: 5% NFDm/TBST.

WBP2NL Antibody (N-term) - Background

WBP2NL is a sperm-specific WW domain-binding protein that promotes meiotic resumption and pronuclear development during oocyte fertilization (Wu et al., 2007 [PubMed 17289678]).[supplied by OMIM].

WBP2NL Antibody (N-term) - References

Wu, A.T., et al. J. Biol. Chem. 282(16):12164-12175(2007)
Collins, J.E., et al. Genome Biol. 5 (10), R84 (2004) :