

ELMO3 Antibody (C-term)
Affinity Purified Rabbit Polyclonal Antibody (Pab)
Catalog # AP17730b**Specification**

ELMO3 Antibody (C-term) - Product Information

Application	WB,E
Primary Accession	Q96BJ8
Other Accession	Q499U2 , Q8BYZ7 , A6QR40 , NP_078988.2
Reactivity	Human
Predicted	Bovine, Mouse, Rat
Host	Rabbit
Clonality	Polyclonal
Isotype	Rabbit IgG
Calculated MW	81467
Antigen Region	594-622

ELMO3 Antibody (C-term) - Additional Information**Gene ID** 79767**Other Names**

Engulfment and cell motility protein 3, ELMO3

Target/Specificity

This ELMO3 antibody is generated from rabbits immunized with a KLH conjugated synthetic peptide between 594-622 amino acids from the C-terminal region of human ELMO3.

Dilution

WB~~1:1000

Format

Purified polyclonal antibody supplied in PBS with 0.09% (W/V) sodium azide. This antibody is purified through a protein A column, followed by peptide affinity purification.

Storage

Maintain refrigerated at 2-8°C for up to 2 weeks. For long term storage store at -20°C in small aliquots to prevent freeze-thaw cycles.

Precautions

ELMO3 Antibody (C-term) is for research use only and not for use in diagnostic or therapeutic procedures.

ELMO3 Antibody (C-term) - Protein Information**Name** ELMO3**Function** Involved in cytoskeletal rearrangements required for phagocytosis of apoptotic cells and

cell motility. Acts in association with DOCK1 and CRK. Was initially proposed to be required in complex with DOCK1 to activate Rac Rho small GTPases. May enhance the guanine nucleotide exchange factor (GEF) activity of DOCK1 (By similarity).

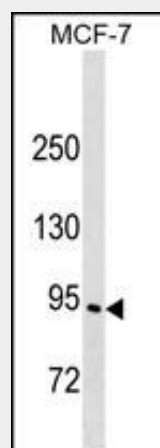
Cellular Location

Cytoplasm.

ELMO3 Antibody (C-term) - Protocols

Provided below are standard protocols that you may find useful for product applications.

- [Western Blot](#)
- [Blocking Peptides](#)
- [Dot Blot](#)
- [Immunohistochemistry](#)
- [Immunofluorescence](#)
- [Immunoprecipitation](#)
- [Flow Cytometry](#)
- [Cell Culture](#)

ELMO3 Antibody (C-term) - Images

ELMO3 Antibody (C-term) (Cat. #AP17730b) western blot analysis in MCF-7 cell line lysates (35ug/lane). This demonstrates the ELMO3 antibody detected the ELMO3 protein (arrow).

ELMO3 Antibody (C-term) - Background

The protein encoded by this gene is similar to a C. elegans protein that functions in phagocytosis of apoptotic cells and in cell migration. Other members of this small family of engulfment and cell motility (ELMO) proteins have been shown to interact with the dedicator of cyto-kinesis 1 protein to promote phagocytosis and effect cell shape changes.

ELMO3 Antibody (C-term) - References

Coskun, M., et al. J. Cell. Biochem. 109(6):1118-1128(2010)
Gumienny, T.L., et al. Cell 107(1):27-41(2001)