

**GJC3 Antibody (C-term)**  
**Affinity Purified Rabbit Polyclonal Antibody (Pab)**  
**Catalog # AP17731b**

**Specification**

---

**GJC3 Antibody (C-term) - Product Information**

Application	WB,E
Primary Accession	<a href="#">Q8NFK1</a>
Other Accession	<a href="#">NP_853516.1</a>
Reactivity	Human
Host	Rabbit
Clonality	Polyclonal
Isotype	Rabbit IgG
Calculated MW	31299
Antigen Region	252-278

**GJC3 Antibody (C-term) - Additional Information**

**Gene ID** 349149

**Other Names**

Gap junction gamma-3 protein, Connexin-302, Cx302, Connexin-313, Cx313, Gap junction epsilon-1 protein, GJC3, GJE1

**Target/Specificity**

This GJC3 antibody is generated from rabbits immunized with a KLH conjugated synthetic peptide between 252-278 amino acids from the C-terminal region of human GJC3.

**Dilution**

WB~~1:1000

**Format**

Purified polyclonal antibody supplied in PBS with 0.09% (W/V) sodium azide. This antibody is purified through a protein A column, followed by peptide affinity purification.

**Storage**

Maintain refrigerated at 2-8°C for up to 2 weeks. For long term storage store at -20°C in small aliquots to prevent freeze-thaw cycles.

**Precautions**

GJC3 Antibody (C-term) is for research use only and not for use in diagnostic or therapeutic procedures.

**GJC3 Antibody (C-term) - Protein Information**

**Name** GJC3

**Synonyms** GJE1

**Function** One gap junction consists of a cluster of closely packed pairs of transmembrane channels, the connexons, through which materials of low MW diffuse from one cell to a neighboring cell.

**Cellular Location**

Cell membrane; Multi-pass membrane protein. Cell junction, gap junction

**Tissue Location**

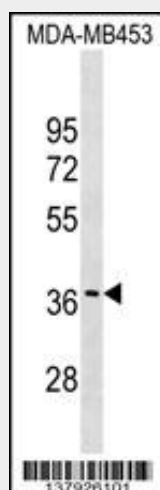
CNS specific. Expression is restricted to brain, spinal cord, and sciatic nerve. According to PubMed:12881038, expression is abundant in skeletal muscle, liver, and heart, and to a minor degree in pancreas and kidney.

**GJC3 Antibody (C-term) - Protocols**

Provided below are standard protocols that you may find useful for product applications.

- [Western Blot](#)
- [Blocking Peptides](#)
- [Dot Blot](#)
- [Immunohistochemistry](#)
- [Immunofluorescence](#)
- [Immunoprecipitation](#)
- [Flow Cytometry](#)
- [Cell Culture](#)

**GJC3 Antibody (C-term) - Images**



GJC3 Antibody (C-term) (Cat. #AP17731b) western blot analysis in MDA-MB453 cell line lysates (35ug/lane). This demonstrates the GJC3 antibody detected the GJC3 protein (arrow).

**GJC3 Antibody (C-term) - Background**

This gene encodes a gap junction protein. The encoded protein, also known as a connexin, plays a role in formation of gap junctions, which provide direct connections between neighboring cells. Mutations in this gene have been reported to be associated with nonsyndromic hearing loss.

**GJC3 Antibody (C-term) - References**

Yang, J.J., et al. Hum. Genet. 128(3):303-313(2010)  
Ramchander, P.V., et al. Genet Test Mol Biomarkers 14(4):539-541(2010)  
Hong, H.M., et al. Hum. Genet. 127(2):191-199(2010)  
Wang, W.H., et al. Audiol. Neurotol. 15(2):81-87(2010)  
Sargiannidou, I., et al. Neurobiol. Dis. 30(2):221-233(2008)