

LRRC29 Antibody (N-term)
Affinity Purified Rabbit Polyclonal Antibody (Pab)
Catalog # AP17734a**Specification**

LRRC29 Antibody (N-term) - Product Information

Application	WB,E
Primary Accession	Q8WV35
Other Accession	NP_001004055.1 , NP_036295.1
Reactivity	Human
Host	Rabbit
Clonality	Polyclonal
Isotype	Rabbit IgG
Antigen Region	32-60

LRRC29 Antibody (N-term) - Additional Information**Other Names**

Leucine-rich repeat-containing protein 29, F-box and leucine-rich repeat protein 9, F-box protein FBL9, F-box/LRR-repeat protein 9, LRRC29, FBL9, FBXL9

Target/Specificity

This LRRC29 antibody is generated from rabbits immunized with a KLH conjugated synthetic peptide between 32-60 amino acids from the N-terminal region of human LRRC29.

Dilution

WB~~1:1000

E~~Use at an assay dependent concentration.

Format

Purified polyclonal antibody supplied in PBS with 0.09% (W/V) sodium azide. This antibody is purified through a protein A column, followed by peptide affinity purification.

Storage

Maintain refrigerated at 2-8°C for up to 2 weeks. For long term storage store at -20°C in small aliquots to prevent freeze-thaw cycles.

Precautions

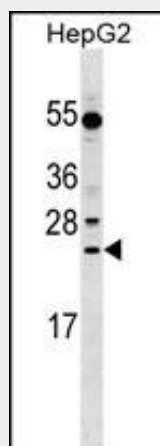
LRRC29 Antibody (N-term) is for research use only and not for use in diagnostic or therapeutic procedures.

LRRC29 Antibody (N-term) - Protein Information**LRRC29 Antibody (N-term) - Protocols**

Provided below are standard protocols that you may find useful for product applications.

- [Western Blot](#)
- [Blocking Peptides](#)
- [Dot Blot](#)
- [Immunohistochemistry](#)
- [Immunofluorescence](#)
- [Immunoprecipitation](#)
- [Flow Cytometry](#)
- [Cell Culture](#)

LRRC29 Antibody (N-term) - Images



LRRC29 Antibody (N-term) (Cat. #AP17734a) western blot analysis in HepG2 cell line lysates (35ug/lane). This demonstrates the LRRC29 antibody detected the LRRC29 protein (arrow).

LRRC29 Antibody (N-term) - Background

This gene encodes a member of the F-box protein family which is characterized by an approximately 40 amino acid motif, the F-box. The F-box proteins constitute one of the four subunits of ubiquitin protein ligase complex called SCFs (SKP1-cullin-F-box), which function in phosphorylation-dependent ubiquitination. The F-box proteins are divided into 3 classes: Fbws containing WD-40 domains, Fbls containing leucine-rich repeats, and Fbxs containing either different protein-protein interaction modules or no recognizable motifs. The protein encoded by this gene belongs to the Fbls class and, in addition to an F-box, contains 9 tandem leucine-rich repeats. Two transcript variants encoding the same protein have been found for this gene. Other variants may occur, but their full-length natures have not been characterized.

LRRC29 Antibody (N-term) - References

Winston, J.T., et al. Curr. Biol. 9(20):1180-1182(1999)