

NXNL1 Antibody (Center)
Affinity Purified Rabbit Polyclonal Antibody (Pab)
Catalog # AP17740c

Specification

NXNL1 Antibody (Center) - Product Information

Application	WB,E
Primary Accession	O96CM4
Other Accession	NP_612463.1
Reactivity	Human
Host	Rabbit
Clonality	Polyclonal
Isotype	Rabbit IgG
Calculated MW	23943
Antigen Region	94-121

NXNL1 Antibody (Center) - Additional Information

Gene ID 115861

Other Names

Nucleoredoxin-like protein 1, Thioredoxin-like protein 6, NXNL1, TXNL6

Target/Specificity

This NXNL1 antibody is generated from rabbits immunized with a KLH conjugated synthetic peptide between 94-121 amino acids from the Central region of human NXNL1.

Dilution

WB~~1:1000

E~~Use at an assay dependent concentration.

Format

Purified polyclonal antibody supplied in PBS with 0.09% (W/V) sodium azide. This antibody is purified through a protein A column, followed by peptide affinity purification.

Storage

Maintain refrigerated at 2-8°C for up to 2 weeks. For long term storage store at -20°C in small aliquots to prevent freeze-thaw cycles.

Precautions

NXNL1 Antibody (Center) is for research use only and not for use in diagnostic or therapeutic procedures.

NXNL1 Antibody (Center) - Protein Information

Name NXNL1

Synonyms TXNL6

Function Plays an important role in retinal cone photoreceptor survival (PubMed:[25957687](#)). In association with glucose transporter SLC16A1/GLUT1 and BSG, promotes retinal cone survival by enhancing aerobic glycolysis and accelerating the entry of glucose into photoreceptors (PubMed:[25957687](#)). May play a role in cone cell viability, slowing down cone degeneration, does not seem to play a role in degenerating rods (By similarity).

Cellular Location

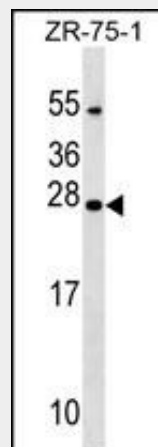
Cell projection, cilium, photoreceptor outer segment {ECO:0000250|UniProtKB:Q8VC33}

NXNL1 Antibody (Center) - Protocols

Provided below are standard protocols that you may find useful for product applications.

- [Western Blot](#)
- [Blocking Peptides](#)
- [Dot Blot](#)
- [Immunohistochemistry](#)
- [Immunofluorescence](#)
- [Immunoprecipitation](#)
- [Flow Cytometry](#)
- [Cell Culture](#)

NXNL1 Antibody (Center) - Images



NXNL1 Antibody (Center) (Cat. #AP17740c) western blot analysis in ZR-75-1 cell line lysates (35ug/lane). This demonstrates the NXNL1 antibody detected the NXNL1 protein (arrow).

NXNL1 Antibody (Center) - Background

NXNL1 may play a role in cone cell viability, slowing down cone degeneration, does not seem to play a role in degenerating rods (By similarity).

NXNL1 Antibody (Center) - References

Reichman, S., et al. Hum. Mol. Genet. 19(2):250-261(2010)
Bin, J., et al. Hum. Mutat. 30 (7), E737-E746 (2009) :
Wang, X.W., et al. Free Radic. Biol. Med. 45(3):336-344(2008)
Lamesch, P., et al. Genomics 89(3):307-315(2007)
Roni, V., et al. BMC Genomics 8, 42 (2007) :