

**PTRH1 Antibody (Center)**  
**Affinity Purified Rabbit Polyclonal Antibody (Pab)**  
**Catalog # AP17745c**

**Specification**

---

**PTRH1 Antibody (Center) - Product Information**

Application	WB,E
Primary Accession	<a href="#">Q86Y79</a>
Other Accession	<a href="#">NP_001002913.1</a>
Reactivity	Human
Host	Rabbit
Clonality	Polyclonal
Isotype	Rabbit IgG
Calculated MW	22937
Antigen Region	102-129

**PTRH1 Antibody (Center) - Additional Information**

**Gene ID** 138428

**Other Names**

Probable peptidyl-tRNA hydrolase, PTH, PTRH1, C9orf115

**Target/Specificity**

This PTRH1 antibody is generated from rabbits immunized with a KLH conjugated synthetic peptide between 102-129 amino acids from the Central region of human PTRH1.

**Dilution**

WB~~1:1000

**Format**

Purified polyclonal antibody supplied in PBS with 0.09% (W/V) sodium azide. This antibody is purified through a protein A column, followed by peptide affinity purification.

**Storage**

Maintain refrigerated at 2-8°C for up to 2 weeks. For long term storage store at -20°C in small aliquots to prevent freeze-thaw cycles.

**Precautions**

PTRH1 Antibody (Center) is for research use only and not for use in diagnostic or therapeutic procedures.

**PTRH1 Antibody (Center) - Protein Information**

**Name** PTRH1 {ECO:0000303|PubMed:30244831, ECO:0000312|HGNC:HGNC:27039}

**Function** Peptidyl-tRNA hydrolase that cleaves nascent chains-tRNAs that are not stably fixed in the P-site of 60S ribosome-nascent chain complexes (PubMed:[30244831](#)). Acts downstream of the

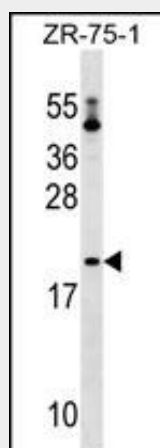
ribosome-associated quality control (RQC) pathway to release non-ubiquitinated nascent chains from 60S and 80S ribosome-nascent chain complexes (PubMed:[30244831](#)). Does not act on ubiquitinated nascent chains, which are cleaved by ANKZF1 for degradation (PubMed:[30244831](#)).

### **PTRH1 Antibody (Center) - Protocols**

Provided below are standard protocols that you may find useful for product applications.

- [Western Blot](#)
- [Blocking Peptides](#)
- [Dot Blot](#)
- [Immunohistochemistry](#)
- [Immunofluorescence](#)
- [Immunoprecipitation](#)
- [Flow Cytometry](#)
- [Cell Culture](#)

### **PTRH1 Antibody (Center) - Images**



PTRH1 Antibody (Center) (Cat. #AP17745c) western blot analysis in ZR-75-1 cell line lysates (35ug/lane). This demonstrates the PTRH1 antibody detected the PTRH1 protein (arrow).

### **PTRH1 Antibody (Center) - Background**

C9orf115 belongs to the Peptidyl-tRNA hydrolase (PTH) family. Peptidyl-tRNA hydrolase (PTH) is a monomeric protein that cleaves the ester bond linking the nascent peptide and tRNA when peptidyl-tRNA is released prematurely from the ribosome. This ensures the recycling of peptidyl-tRNAs into tRNAs produced through abortion of translation and is essential for cell viability.

### **PTRH1 Antibody (Center) - References**

Satoh, J., et al. Neuropathol. Appl. Neurobiol. 35(1):16-35(2009)  
De Pereda, J.M., et al. J. Biol. Chem. 279(9):8111-8115(2004)