

CYLN2 Antibody (C-term)
Affinity Purified Rabbit Polyclonal Antibody (Pab)
Catalog # AP17751b

Specification

CYLN2 Antibody (C-term) - Product Information

Application	WB,E
Primary Accession	O9UDT6
Other Accession	O55156 , O9Z0H8 , NP_003379.3 , NP_115797.1
Reactivity	Human, Mouse
Predicted	Rat
Host	Rabbit
Clonality	Polyclonal
Isotype	Rabbit IgG
Calculated MW	115837
Antigen Region	911-940

CYLN2 Antibody (C-term) - Additional Information

Gene ID 7461

Other Names

CAP-Gly domain-containing linker protein 2, Cytoplasmic linker protein 115, CLIP-115, Cytoplasmic linker protein 2, Williams-Beuren syndrome chromosomal region 3 protein, Williams-Beuren syndrome chromosomal region 4 protein, CLIP2, CYLN2, KIAA0291, WBSCR3, WBSCR4, WSCR4

Target/Specificity

This CYLN2 antibody is generated from rabbits immunized with a KLH conjugated synthetic peptide between 911-940 amino acids from the C-terminal region of human CYLN2.

Dilution

WB~~1:1000

E~~Use at an assay dependent concentration.

Format

Purified polyclonal antibody supplied in PBS with 0.09% (W/V) sodium azide. This antibody is purified through a protein A column, followed by peptide affinity purification.

Storage

Maintain refrigerated at 2-8°C for up to 2 weeks. For long term storage store at -20°C in small aliquots to prevent freeze-thaw cycles.

Precautions

CYLN2 Antibody (C-term) is for research use only and not for use in diagnostic or therapeutic procedures.

CYLN2 Antibody (C-term) - Protein Information

Name CLIP2

Synonyms CYLN2, KIAA0291, WBSCR3, WBSCR4, WSCR4

Function Seems to link microtubules to dendritic lamellar body (DLB), a membranous organelle predominantly present in bulbous dendritic appendages of neurons linked by dendrodendritic gap junctions. May operate in the control of brain-specific organelle translocations (By similarity).

Cellular Location

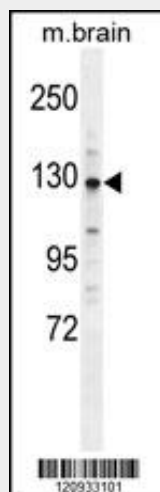
Cytoplasm {ECO:0000250|UniProtKB:O55156}. Cytoplasm, cytoskeleton {ECO:0000250|UniProtKB:Q9Z0H8}. Note=Localizes preferentially to the ends of tyrosinated microtubules {ECO:0000250|UniProtKB:Q9Z0H8}

CYLN2 Antibody (C-term) - Protocols

Provided below are standard protocols that you may find useful for product applications.

- [Western Blot](#)
- [Blocking Peptides](#)
- [Dot Blot](#)
- [Immunohistochemistry](#)
- [Immunofluorescence](#)
- [Immunoprecipitation](#)
- [Flow Cytometry](#)
- [Cell Culture](#)

CYLN2 Antibody (C-term) - Images



CYLN2 Antibody (C-term) (Cat. #AP17751b) western blot analysis in mouse brain tissue lysates (35ug/lane). This demonstrates the CYLN2 antibody detected the CYLN2 protein (arrow).

CYLN2 Antibody (C-term) - Background

The protein encoded by this gene belongs to the family of cytoplasmic linker proteins, which have been proposed to mediate the interaction between specific membranous organelles and microtubules. This protein was found to associate with both microtubules and an organelle called the dendritic lamellar body. This gene is hemizygotously deleted in Williams syndrome, a

multisystem developmental disorder caused by the deletion of contiguous genes at 7q11.23. Alternative splicing of this gene generates 2 transcript variants.

CYLN2 Antibody (C-term) - References

Rose, J. Phd, et al. Mol. Med. (2010) In press :
Olsen, J.V., et al. Cell 127(3):635-648(2006)
Olsen, J.V., et al. Cell 127(3):635-648(2006)
Cheng, J., et al. Science 308(5725):1149-1154(2005)
Evgrafov, O.V., et al. Nat. Genet. 36(6):602-606(2004)