

**SR140 Antibody (N-term)**  
**Affinity Purified Rabbit Polyclonal Antibody (Pab)**  
**Catalog # AP17774a**

**Specification**

---

**SR140 Antibody (N-term) - Product Information**

Application	WB,E
Primary Accession	<a href="#">O15042</a>
Other Accession	<a href="#">NP_001073884.1</a>
Reactivity	Human
Host	Rabbit
Clonality	Polyclonal
Isotype	Rabbit IgG
Calculated MW	118292
Antigen Region	33-62

**SR140 Antibody (N-term) - Additional Information**

**Gene ID** 23350

**Other Names**

U2 snRNP-associated SURP motif-containing protein, 140 kDa Ser/Arg-rich domain protein, U2-associated protein SR140, U2SURP, KIAA0332, SR140

**Target/Specificity**

This SR140 antibody is generated from rabbits immunized with a KLH conjugated synthetic peptide between 33-62 amino acids from the N-terminal region of human SR140.

**Dilution**

WB~~1:1000

E~~Use at an assay dependent concentration.

**Format**

Purified polyclonal antibody supplied in PBS with 0.09% (W/V) sodium azide. This antibody is purified through a protein A column, followed by peptide affinity purification.

**Storage**

Maintain refrigerated at 2-8°C for up to 2 weeks. For long term storage store at -20°C in small aliquots to prevent freeze-thaw cycles.

**Precautions**

SR140 Antibody (N-term) is for research use only and not for use in diagnostic or therapeutic procedures.

**SR140 Antibody (N-term) - Protein Information**

**Name** U2SURP

**Synonyms** KIAA0332, SR140

**Cellular Location**

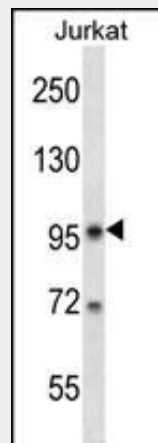
Nucleus.

**SR140 Antibody (N-term) - Protocols**

Provided below are standard protocols that you may find useful for product applications.

- [Western Blot](#)
- [Blocking Peptides](#)
- [Dot Blot](#)
- [Immunohistochemistry](#)
- [Immunofluorescence](#)
- [Immunoprecipitation](#)
- [Flow Cytometry](#)
- [Cell Culture](#)

**SR140 Antibody (N-term) - Images**



SR140 Antibody (N-term) (Cat. #AP17774a) western blot analysis in Jurkat cell line lysates (35ug/lane). This demonstrates the SR140 antibody detected the SR140 protein (arrow).

**SR140 Antibody (N-term) - Background**

SR140 belongs to the splicing factor SR family. Three isoforms have been identified.

**SR140 Antibody (N-term) - References**

Will, C.L., et al. EMBO J. 21(18):4978-4988(2002)