

SLFN12 Antibody (Center)
Affinity Purified Rabbit Polyclonal Antibody (Pab)
Catalog # AP17783c

Specification

SLFN12 Antibody (Center) - Product Information

Application	WB,E
Primary Accession	Q8IYM2
Other Accession	NP_060512.3
Reactivity	Human
Host	Rabbit
Clonality	Polyclonal
Isotype	Rabbit IgG
Antigen Region	192-220

SLFN12 Antibody (Center) - Additional Information

Gene ID 55106

Other Names

Schlafen family member 12, SLFN12

Target/Specificity

This SLFN12 antibody is generated from rabbits immunized with a KLH conjugated synthetic peptide between 192-220 amino acids from the Central region of human SLFN12.

Dilution

WB~~1:1000

E~~Use at an assay dependent concentration.

Format

Purified polyclonal antibody supplied in PBS with 0.09% (W/V) sodium azide. This antibody is purified through a protein A column, followed by peptide affinity purification.

Storage

Maintain refrigerated at 2-8°C for up to 2 weeks. For long term storage store at -20°C in small aliquots to prevent freeze-thaw cycles.

Precautions

SLFN12 Antibody (Center) is for research use only and not for use in diagnostic or therapeutic procedures.

SLFN12 Antibody (Center) - Protein Information

Name SLFN12 ([HGNC:25500](#))

Function Ribonuclease which is part of an E2/17beta-estradiol-induced pro-apoptotic signaling pathway. E2 stabilizes the PDE3A/SLFN12 complex in the cytosol, promoting the

dephosphorylation of SLFN12 and activating its pro-apoptotic ribosomal RNA/rRNA ribonuclease activity. This apoptotic pathway might be relevant in tissues with high concentration of E2 and be for instance involved in placenta remodeling (PubMed:[31420216](#), PubMed:[34272366](#), PubMed:[34707099](#), PubMed:[35104454](#)). May play a role in cell differentiation (PubMed:[30045019](#)).

Cellular Location

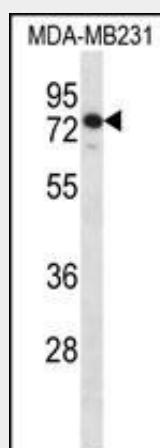
Nucleus. Cytoplasm, cytosol

SLFN12 Antibody (Center) - Protocols

Provided below are standard protocols that you may find useful for product applications.

- [Western Blot](#)
- [Blocking Peptides](#)
- [Dot Blot](#)
- [Immunohistochemistry](#)
- [Immunofluorescence](#)
- [Immunoprecipitation](#)
- [Flow Cytometry](#)
- [Cell Culture](#)

SLFN12 Antibody (Center) - Images



SLFN12 Antibody (Center) (Cat. #AP17783c) western blot analysis in MDA-MB231 cell line lysates (35ug/lane). This demonstrates the SLFN12 antibody detected the SLFN12 protein (arrow).

SLFN12 Antibody (Center) - Background

Belongs to the Schlafen family.

SLFN12 Antibody (Center) - References

Schwarz, D.A., et al. Immunity 9(5):657-668(1998)