

**CELA1 Antibody (N-term)**  
**Affinity Purified Rabbit Polyclonal Antibody (Pab)**  
**Catalog # AP17787a****Specification**

---

**CELA1 Antibody (N-term) - Product Information**

Application	WB,E
Primary Accession	<a href="#">O9UNI1</a>
Other Accession	<a href="#">NP_001962.3</a>
Reactivity	Human
Host	Rabbit
Clonality	Polyclonal
Isotype	Rabbit IgG
Calculated MW	27798
Antigen Region	51-79

**CELA1 Antibody (N-term) - Additional Information****Gene ID** 1990**Other Names**

Chymotrypsin-like elastase family member 1, Elastase-1, Pancreatic elastase 1, CELA1, ELA1

**Target/Specificity**

This CELA1 antibody is generated from rabbits immunized with a KLH conjugated synthetic peptide between 51-79 amino acids from the N-terminal region of human CELA1.

**Dilution**

WB~~1:1000

E~~Use at an assay dependent concentration.

**Format**

Purified polyclonal antibody supplied in PBS with 0.09% (W/V) sodium azide. This antibody is purified through a protein A column, followed by peptide affinity purification.

**Storage**

Maintain refrigerated at 2-8°C for up to 2 weeks. For long term storage store at -20°C in small aliquots to prevent freeze-thaw cycles.

**Precautions**

CELA1 Antibody (N-term) is for research use only and not for use in diagnostic or therapeutic procedures.

**CELA1 Antibody (N-term) - Protein Information****Name** CELA1**Synonyms** ELA1

**Function** Serine proteases that hydrolyze many proteins in addition to elastin.

**Cellular Location**

Secreted {ECO:0000250|UniProtKB:P00772}.

**Tissue Location**

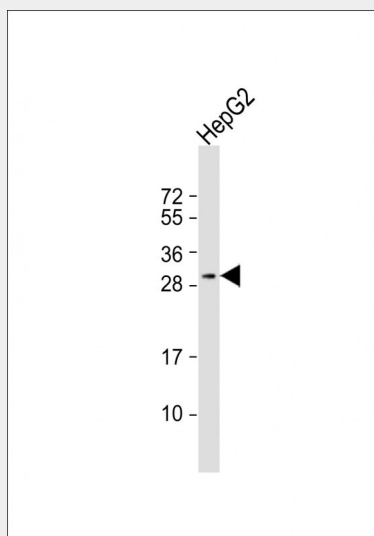
Basal layers of epidermis (at protein level). Not expressed in the pancreas.

### CELA1 Antibody (N-term) - Protocols

Provided below are standard protocols that you may find useful for product applications.

- [Western Blot](#)
- [Blocking Peptides](#)
- [Dot Blot](#)
- [Immunohistochemistry](#)
- [Immunofluorescence](#)
- [Immunoprecipitation](#)
- [Flow Cytometry](#)
- [Cell Culture](#)

### CELA1 Antibody (N-term) - Images



Anti-CELA1 Antibody (N-term) at 1:1000 dilution + HepG2 whole cell lysate Lysates/proteins at 20 µg per lane. Secondary Goat Anti-Rabbit IgG, (H+L), Peroxidase conjugated at 1/10000 dilution. Predicted band size : 28 kDa Blocking/Dilution buffer: 5% NFDm/TBST.

### CELA1 Antibody (N-term) - Background

Elastases form a subfamily of serine proteases that hydrolyze many proteins in addition to elastin. Humans have six elastase genes which encode the structurally similar proteins elastase 1, 2, 2A, 2B, 3A, and 3B. Unlike other elastases, pancreatic elastase 1 is not expressed in the pancreas. To date, elastase 1 expression has only been detected in skin keratinocytes. Clinical literature that describes human elastase 1 activity in the pancreas or fecal material is actually referring to

chymotrypsin-like elastase family, member 3B.

#### **CELA1 Antibody (N-term) - References**

Bailey, S.D., et al. Diabetes Care 33(10):2250-2253(2010)  
Rose, J.E., et al. Mol. Med. 16 (7-8), 247-253 (2010) :  
Roberts, K.E., et al. Gastroenterology 139(1):130-139(2010)  
Talmud, P.J., et al. Am. J. Hum. Genet. 85(5):628-642(2009)  
Talas, U., et al. J. Invest. Dermatol. 114(1):165-170(2000)