

**TBR1 Antibody (N-term)**  
**Affinity Purified Rabbit Polyclonal Antibody (Pab)**  
**Catalog # AP17795a**

**Specification**

---

**TBR1 Antibody (N-term) - Product Information**

|                   |  |
|-------------------|--|
| Application       | WB,E   |
| Primary Accession | <a href="#">Q16650</a>                               |
| Other Accession   | <a href="#">Q64336</a> , <a href="#">NP_006584.1</a> |
| Reactivity        | Human, Mouse   |
| Host              | Rabbit   |
| Clonality         | Polyclonal   |
| Isotype           | Rabbit IgG   |
| Calculated MW     | 74053  |
| Antigen Region    | 52-80  |

**TBR1 Antibody (N-term) - Additional Information**

**Gene ID** 10716

**Other Names**

T-box brain protein 1, T-brain-1, TBR-1, TES-56, TBR1

**Target/Specificity**

This TBR1 antibody is generated from rabbits immunized with a KLH conjugated synthetic peptide between 52-80 amino acids from the N-terminal region of human TBR1.

**Dilution**

WB~~1:1000

**Format**

Purified polyclonal antibody supplied in PBS with 0.09% (W/V) sodium azide. This antibody is purified through a protein A column, followed by peptide affinity purification.

**Storage**

Maintain refrigerated at 2-8°C for up to 2 weeks. For long term storage store at -20°C in small aliquots to prevent freeze-thaw cycles.

**Precautions**

TBR1 Antibody (N-term) is for research use only and not for use in diagnostic or therapeutic procedures.

**TBR1 Antibody (N-term) - Protein Information**

**Name** TBR1

**Function** Transcriptional repressor involved in multiple aspects of cortical development, including neuronal migration, laminar and areal identity, and axonal projection (PubMed:[25232744](#),

PubMed:[30250039](#)). As transcriptional repressor of FEZF2, it blocks the formation of the corticospinal (CS) tract from layer 6 projection neurons, thereby restricting the origin of CS axons specifically to layer 5 neurons (By similarity).

**Cellular Location**

Nucleus

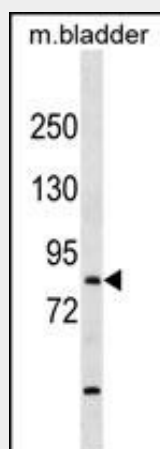
**Tissue Location**

Brain.

**TBR1 Antibody (N-term) - Protocols**

Provided below are standard protocols that you may find useful for product applications.

- [Western Blot](#)
- [Blocking Peptides](#)
- [Dot Blot](#)
- [Immunohistochemistry](#)
- [Immunofluorescence](#)
- [Immunoprecipitation](#)
- [Flow Cytometry](#)
- [Cell Culture](#)

**TBR1 Antibody (N-term) - Images**

TBR1 Antibody (N-term) (Cat. #AP17795a) western blot analysis in mouse bladder tissue lysates (35ug/lane). This demonstrates the TBR1 antibody detected the TBR1 protein (arrow).

**TBR1 Antibody (N-term) - Background**

This gene is a member of a conserved family of genes that share a common DNA-binding domain, the T-box. T-box genes encode transcription factors involved in the regulation of developmental processes. A similar protein has been disrupted in mice and shown to be critical for early cortical development, and causes loss of projection neurons in the olfactory bulbs and olfactory cortex. The C-terminal region this similar protein was found to be necessary and sufficient for association with the guanylate kinase domain of calcium/calmodulin-dependent serine protein kinase. [provided by RefSeq].

**TBR1 Antibody (N-term) - References**

Hillier, L.W., et al. Nature 434(7034):724-731(2005)  
Stefanovska, A.M., et al. Cancer Res. 61(22):8351-8352(2001)  
Hsueh, Y.P., et al. Nature 404(6775):298-302(2000)  
Bulfone, A., et al. Neuron 15(1):63-78(1995)