

**SIX6 Antibody (Center)**  
**Affinity Purified Rabbit Polyclonal Antibody (Pab)**  
**Catalog # AP17798c****Specification**

---

**SIX6 Antibody (Center) - Product Information**

Application	WB,E
Primary Accession	<a href="#">O95475</a>
Other Accession	<a href="#">O9QZ28</a> , <a href="#">O93307</a> , <a href="#">O62233</a> , <a href="#">O95343</a> , <a href="#">O42406</a> , <a href="#">NP_031400.2</a>
Reactivity	Human, Mouse
Predicted	Chicken
Host	Rabbit
Clonality	Polyclonal
Isotype	Rabbit IgG
Calculated MW	27687
Antigen Region	96-124

**SIX6 Antibody (Center) - Additional Information****Gene ID** 4990**Other Names**

Homeobox protein SIX6, Homeodomain protein OPTX2, Optic homeobox 2, Sine oculis homeobox homolog 6, SIX6, OPTX2, SIX9

**Target/Specificity**

This SIX6 antibody is generated from rabbits immunized with a KLH conjugated synthetic peptide between 96-124 amino acids from the Central region of human SIX6.

**Dilution**

WB~~1:1000

E~~Use at an assay dependent concentration.

**Format**

Purified polyclonal antibody supplied in PBS with 0.09% (W/V) sodium azide. This antibody is purified through a protein A column, followed by peptide affinity purification.

**Storage**

Maintain refrigerated at 2-8°C for up to 2 weeks. For long term storage store at -20°C in small aliquots to prevent freeze-thaw cycles.

**Precautions**

SIX6 Antibody (Center) is for research use only and not for use in diagnostic or therapeutic procedures.

**SIX6 Antibody (Center) - Protein Information**

**Name** SIX6

**Synonyms** OPTX2, SIX9

**Function** May be involved in eye development.

**Cellular Location**

Nucleus {ECO:0000255|PROSITE-ProRule:PRU00108}.

**Tissue Location**

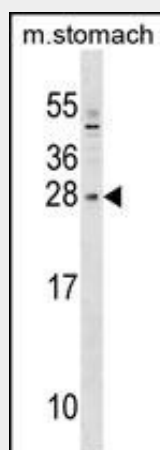
Expressed in the developing and adult retina. Also expressed in the hypothalamic and the pituitary regions

### SIX6 Antibody (Center) - Protocols

Provided below are standard protocols that you may find useful for product applications.

- [Western Blot](#)
- [Blocking Peptides](#)
- [Dot Blot](#)
- [Immunohistochemistry](#)
- [Immunofluorescence](#)
- [Immunoprecipitation](#)
- [Flow Cytometry](#)
- [Cell Culture](#)

### SIX6 Antibody (Center) - Images



SIX6 Antibody (Center) (Cat. #AP17798c) western blot analysis in mouse stomach tissue lysates (35ug/lane). This demonstrates the SIX6 antibody detected the SIX6 protein (arrow).

### SIX6 Antibody (Center) - Background

The protein encoded by this gene is a homeobox protein that is similar to the *Drosophila* 'sine oculis' gene product. This gene is found in a cluster of related genes on chromosome 14 and is thought to be involved in eye development. Defects in this gene are a cause of isolated microphthalmia with cataract type 2 (MCOPCT2).

### SIX6 Antibody (Center) - References

Zhang, X., et al. Mol. Vis. 15, 2911-2918 (2009) :  
Ou, Z., et al. Am. J. Med. Genet. A 146A (19), 2480-2489 (2008) :  
Hu, S., et al. Biochemistry 47(11):3586-3594(2008)  
Aijaz, S., et al. Invest. Ophthalmol. Vis. Sci. 45(11):3871-3876(2004)  
Gallardo, M.E., et al. Am. J. Med. Genet. A 129A (1), 92-94 (2004) :