

**RBP3 Antibody (Center)**  
**Affinity Purified Rabbit Polyclonal Antibody (Pab)**  
**Catalog # AP17803c****Specification**

---

**RBP3 Antibody (Center) - Product Information**

Application	WB,E
Primary Accession	<a href="#">P10745</a>
Other Accession	<a href="#">P49194</a> , <a href="#">NP_002891.1</a>
Reactivity	Mouse
Host	Rabbit
Clonality	Polyclonal
Isotype	Rabbit IgG
Antigen Region	784-811

**RBP3 Antibody (Center) - Additional Information****Gene ID** 5949**Other Names**

Retinol-binding protein 3, Interphotoreceptor retinoid-binding protein, IRBP, Interstitial retinol-binding protein, RBP3

**Target/Specificity**

This RBP3 antibody is generated from rabbits immunized with a KLH conjugated synthetic peptide between 784-811 amino acids from the Central region of human RBP3.

**Dilution**

WB~~1:2000

**Format**

Purified polyclonal antibody supplied in PBS with 0.09% (W/V) sodium azide. This antibody is purified through a protein A column, followed by peptide affinity purification.

**Storage**

Maintain refrigerated at 2-8°C for up to 2 weeks. For long term storage store at -20°C in small aliquots to prevent freeze-thaw cycles.

**Precautions**

RBP3 Antibody (Center) is for research use only and not for use in diagnostic or therapeutic procedures.

**RBP3 Antibody (Center) - Protein Information****Name** RBP3

**Function** IRBP shuttles 11-cis and all trans retinoids between the retinol isomerase in the pigment epithelium and the visual pigments in the photoreceptor cells of the retina.

### Cellular Location

Secreted, extracellular space, extracellular matrix, interphotoreceptor matrix.

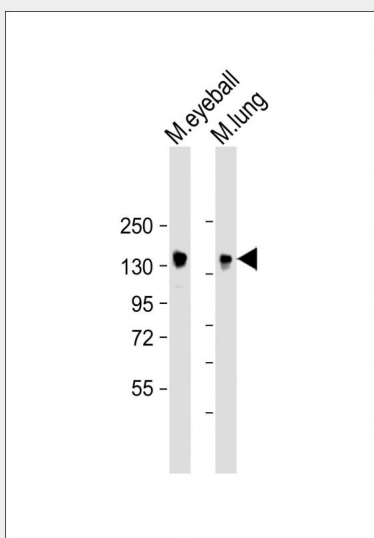
Note=Interphotoreceptor matrix that permeates the space between the retina and the contiguous layer of pigment epithelium cells

### RBP3 Antibody (Center) - Protocols

Provided below are standard protocols that you may find useful for product applications.

- [Western Blot](#)
- [Blocking Peptides](#)
- [Dot Blot](#)
- [Immunohistochemistry](#)
- [Immunofluorescence](#)
- [Immunoprecipitation](#)
- [Flow Cytometry](#)
- [Cell Culture](#)

### RBP3 Antibody (Center) - Images



All lanes : Anti-RBP3 Antibody (Center) at 1:2000 dilution Lane 1: mouse eyeball lysate Lane 2: mouse lung lysate Lysates/proteins at 20 µg per lane. Secondary Goat Anti-Rabbit IgG, (H+L), Peroxidase conjugated at 1/10000 dilution. Predicted band size : 135 kDa Blocking/Dilution buffer: 5% NFDM/TBST.

### RBP3 Antibody (Center) - Background

Interphotoreceptor retinol-binding protein is a large glycoprotein known to bind retinoids and found primarily in the interphotoreceptor matrix of the retina between the retinal pigment epithelium and the photoreceptor cells. It is thought to transport retinoids between the retinal pigment epithelium and the photoreceptors, a critical role in the visual process. The human IRBP gene is approximately 9.5 kbp in length and consists of four exons separated by three introns. The introns are 1.6-1.9 kbp long. The gene is transcribed by photoreceptor and retinoblastoma cells into an approximately 4.3-kilobase mRNA that is translated and

processed into a glycosylated protein of 135,000 Da. The amino acid sequence of human IRBP can be divided into four contiguous homology domains with 33-38% identity, suggesting a series of gene duplication events. In the gene, the boundaries of these domains are not defined by exon-intron junctions, as might have been expected. The first three homology domains and part of the fourth are all encoded by the first large exon, which is 3,180 base pairs long. The remainder of the fourth domain is encoded in the last three exons, which are 191, 143, and approximately 740 base pairs long, respectively.

### **RBP3 Antibody (Center) - References**

Garcia-Ramirez, M., et al. Diabetologia 52(12):2633-2641(2009)  
den Hollander, A.I., et al. Invest. Ophthalmol. Vis. Sci. 50(4):1864-1872(2009)  
Jin, M., et al. J. Neurosci. 29(5):1486-1495(2009)  
Descamps, F.J., et al. J. Cell. Mol. Med. 12 (6A), 2449-2456 (2008) :  
Howard, O.M., et al. Blood 105(11):4207-4214(2005)