

**ALX1 Antibody (Center)**  
**Affinity Purified Rabbit Polyclonal Antibody (Pab)**  
**Catalog # AP17822c****Specification**

---

**ALX1 Antibody (Center) - Product Information**

Application	WB,E
Primary Accession	<a href="#">Q15699</a>
Other Accession	<a href="#">NP_008913.2</a>
Reactivity	Human
Host	Rabbit
Clonality	Polyclonal
Isotype	Rabbit IgG
Calculated MW	36961
Antigen Region	97-122

**ALX1 Antibody (Center) - Additional Information****Gene ID** 8092**Other Names**

ALX homeobox protein 1, Cartilage homeoprotein 1, CART-1, ALX1, CART1

**Target/Specificity**

This ALX1 antibody is generated from rabbits immunized with a KLH conjugated synthetic peptide between 97-122 amino acids from the Central region of human ALX1.

**Dilution**

WB~~1:1000

E~~Use at an assay dependent concentration.

**Format**

Purified polyclonal antibody supplied in PBS with 0.09% (W/V) sodium azide. This antibody is purified through a protein A column, followed by peptide affinity purification.

**Storage**

Maintain refrigerated at 2-8°C for up to 2 weeks. For long term storage store at -20°C in small aliquots to prevent freeze-thaw cycles.

**Precautions**

ALX1 Antibody (Center) is for research use only and not for use in diagnostic or therapeutic procedures.

**ALX1 Antibody (Center) - Protein Information****Name** ALX1 ([HGNC:1494](#))**Function** Sequence-specific DNA-binding transcription factor that binds palindromic sequences

within promoters and may activate or repress the transcription of a subset of genes (PubMed:[8756334](#), PubMed:[9753625](#)). Most probably regulates the expression of genes involved in the development of mesenchyme-derived craniofacial structures. Early on in development, it plays a role in forebrain mesenchyme survival (PubMed:[20451171](#)). May also induce epithelial to mesenchymal transition (EMT) through the expression of SNAI1 (PubMed:[23288509](#)).

**Cellular Location**

Nucleus

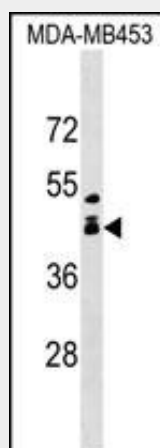
**Tissue Location**

Cartilage and cervix tissue.

**ALX1 Antibody (Center) - Protocols**

Provided below are standard protocols that you may find useful for product applications.

- [Western Blot](#)
- [Blocking Peptides](#)
- [Dot Blot](#)
- [Immunohistochemistry](#)
- [Immunofluorescence](#)
- [Immunoprecipitation](#)
- [Flow Cytometry](#)
- [Cell Culture](#)

**ALX1 Antibody (Center) - Images**

ALX1 Antibody (Center) (Cat. #AP17822c) western blot analysis in MDA-MB453 cell line lysates (35ug/lane). This demonstrates the ALX1 antibody detected the ALX1 protein (arrow).

**ALX1 Antibody (Center) - Background**

The specific function of this gene has yet to be determined in humans; however, in rodents, it is necessary for survival of the forebrain mesenchyme and may also be involved in development of the cervix. Mutations in the mouse gene lead to neural tube defects such as acrania and meroanencephaly. [provided by RefSeq].

**ALX1 Antibody (Center) - References**

Uz, E., et al. Am. J. Hum. Genet. 86(5):789-796(2010)  
Iioka, T., et al. J. Bone Miner. Res. 18(8):1419-1429(2003)  
Qu, S., et al. Development 126(2):359-369(1999)  
Cai, R.L. Biochem. Biophys. Res. Commun. 250(2):305-311(1998)  
Gordon, D.F., et al. DNA Cell Biol. 15(7):531-541(1996)