

DR1 Antibody (Center)
Affinity Purified Rabbit Polyclonal Antibody (Pab)
Catalog # AP17826c**Specification**

DR1 Antibody (Center) - Product Information

Application	WB,E
Primary Accession	Q01658
Other Accession	Q5XI68 , Q91WV0 , Q5ZMV3 , NP_001929.1
Reactivity	Human, Mouse
Predicted	Chicken, Rat
Host	Rabbit
Clonality	Polyclonal
Isotype	Rabbit IgG
Calculated MW	19444
Antigen Region	83-112

DR1 Antibody (Center) - Additional Information**Gene ID** 1810**Other Names**

Protein Dr1, Down-regulator of transcription 1, Negative cofactor 2-beta, NC2-beta, TATA-binding protein-associated phosphoprotein, DR1

Target/Specificity

This DR1 antibody is generated from rabbits immunized with a KLH conjugated synthetic peptide between 83-112 amino acids from the Central region of human DR1.

Dilution

WB~~1:1000

Format

Purified polyclonal antibody supplied in PBS with 0.09% (W/V) sodium azide. This antibody is purified through a protein A column, followed by peptide affinity purification.

Storage

Maintain refrigerated at 2-8°C for up to 2 weeks. For long term storage store at -20°C in small aliquots to prevent freeze-thaw cycles.

Precautions

DR1 Antibody (Center) is for research use only and not for use in diagnostic or therapeutic procedures.

DR1 Antibody (Center) - Protein Information**Name** DR1

Function The association of the DR1/DRAP1 heterodimer with TBP results in a functional repression of both activated and basal transcription of class II genes. This interaction precludes the formation of a transcription-competent complex by inhibiting the association of TFIIA and/or TFIIB with TBP. Can bind to DNA on its own. Component of the ATAC complex, a complex with histone acetyltransferase activity on histones H3 and H4.

Cellular Location

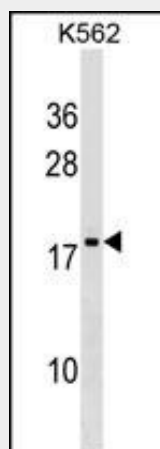
Nucleus.

DR1 Antibody (Center) - Protocols

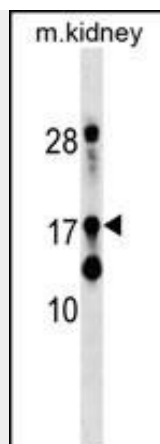
Provided below are standard protocols that you may find useful for product applications.

- [Western Blot](#)
- [Blocking Peptides](#)
- [Dot Blot](#)
- [Immunohistochemistry](#)
- [Immunofluorescence](#)
- [Immunoprecipitation](#)
- [Flow Cytometry](#)
- [Cell Culture](#)

DR1 Antibody (Center) - Images



DR1 Antibody (Center) (Cat. #AP17826c) western blot analysis in K562 cell line lysates (35ug/lane). This demonstrates the DR1 antibody detected the DR1 protein (arrow).



DR1 Antibody (Center) (Cat. #AP17826c) western blot analysis in mouse kidney tissue lysates (35ug/lane). This demonstrates the DR1 antibody detected the DR1 protein (arrow).

DR1 Antibody (Center) - Background

This gene encodes a TBP- (TATA box-binding protein) associated phosphoprotein that represses both basal and activated levels of transcription. The encoded protein is phosphorylated in vivo and this phosphorylation affects its interaction with TBP. This protein contains a histone fold motif at the amino terminus, a TBP-binding domain, and a glutamine- and alanine-rich region. The binding of DR1 repressor complexes to TBP-promoter complexes may establish a mechanism in which an altered DNA conformation, together with the formation of higher order complexes, inhibits the assembly of the preinitiation complex and controls the rate of RNA polymerase II transcription.

DR1 Antibody (Center) - References

Corneveaux, J.J., et al. Hum. Mol. Genet. 19(16):3295-3301(2010)
Kantidakis, T., et al. Nucleic Acids Res. 38(4):1228-1239(2010)
Albert, T.K., et al. Genome Biol. 11 (3), R33 (2010) :
Kahle, J., et al. J. Biol. Chem. 284(14):9382-9393(2009)
Wang, Y.L., et al. J. Biol. Chem. 283(49):33808-33815(2008)