

RMND5A Antibody (C-term)
Affinity Purified Rabbit Polyclonal Antibody (Pab)
Catalog # AP17828b**Specification**

RMND5A Antibody (C-term) - Product Information

Application	WB,E
Primary Accession	Q9H871
Other Accession	Q6GLP4 , Q80YQ8 , NP_073617.1
Reactivity	Human, Mouse
Predicted	Xenopus
Host	Rabbit
Clonality	Polyclonal
Isotype	Rabbit IgG
Calculated MW	43993
Antigen Region	300-327

RMND5A Antibody (C-term) - Additional Information**Gene ID** 64795**Other Names**

Protein RMD5 homolog A, RMND5A

Target/Specificity

This RMND5A antibody is generated from rabbits immunized with a KLH conjugated synthetic peptide between 300-327 amino acids from the C-terminal region of human RMND5A.

Dilution

WB~~1:1000

E~~Use at an assay dependent concentration.

Format

Purified polyclonal antibody supplied in PBS with 0.09% (W/V) sodium azide. This antibody is purified through a protein A column, followed by peptide affinity purification.

Storage

Maintain refrigerated at 2-8°C for up to 2 weeks. For long term storage store at -20°C in small aliquots to prevent freeze-thaw cycles.

Precautions

RMND5A Antibody (C-term) is for research use only and not for use in diagnostic or therapeutic procedures.

RMND5A Antibody (C-term) - Protein Information**Name** RMND5A

Function Core component of the CTLH E3 ubiquitin-protein ligase complex that selectively accepts ubiquitin from UBE2H and mediates ubiquitination and subsequent proteasomal degradation of the transcription factor HBP1. MAEA and RMND5A are both required for catalytic activity of the CTLH E3 ubiquitin-protein ligase complex (PubMed:[29911972](#)). Catalytic activity of the complex is required for normal cell proliferation (PubMed:[29911972](#)). The CTLH E3 ubiquitin-protein ligase complex is not required for the degradation of enzymes involved in gluconeogenesis, such as FBP1 (PubMed:[29911972](#)).

Cellular Location

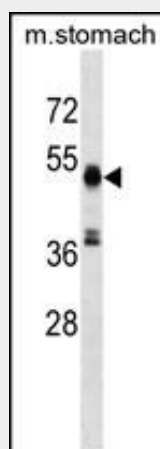
Nucleus, nucleoplasm. Cytoplasm

RMND5A Antibody (C-term) - Protocols

Provided below are standard protocols that you may find useful for product applications.

- [Western Blot](#)
- [Blocking Peptides](#)
- [Dot Blot](#)
- [Immunohistochemistry](#)
- [Immunofluorescence](#)
- [Immunoprecipitation](#)
- [Flow Cytometry](#)
- [Cell Culture](#)

RMND5A Antibody (C-term) - Images



RMND5A Antibody (C-term) (Cat. #AP17828b) western blot analysis in mouse stomach tissue lysates (35ug/lane). This demonstrates the RMND5A antibody detected the RMND5A protein (arrow).

RMND5A Antibody (C-term) - Background

RMND5A contains one CTLH domain and one LisH domain. There are two isoforms.

RMND5A Antibody (C-term) - References

Kobayashi, N., et al. Gene 396(2):236-247(2007)
Bowzard, J.B., et al. J. Biol. Chem. 282(24):17568-17580(2007)
Lamesch, P., et al. Genomics 89(3):307-315(2007)
Colland, F., et al. Genome Res. 14(7):1324-1332(2004)