

SCML2 Antibody (Center)
Affinity Purified Rabbit Polyclonal Antibody (Pab)
Catalog # AP17829c**Specification**

SCML2 Antibody (Center) - Product Information

Application	WB,E
Primary Accession	O9UQR0
Other Accession	NP_006080.1
Reactivity	Human
Host	Rabbit
Clonality	Polyclonal
Isotype	Rabbit IgG
Calculated MW	77257
Antigen Region	348-375

SCML2 Antibody (Center) - Additional Information**Gene ID** 10389**Other Names**

Sex comb on midleg-like protein 2, SCML2

Target/Specificity

This SCML2 antibody is generated from rabbits immunized with a KLH conjugated synthetic peptide between 348-375 amino acids from the Central region of human SCML2.

Dilution

WB~~1:1000

E~~Use at an assay dependent concentration.

Format

Purified polyclonal antibody supplied in PBS with 0.09% (W/V) sodium azide. This antibody is purified through a protein A column, followed by peptide affinity purification.

Storage

Maintain refrigerated at 2-8°C for up to 2 weeks. For long term storage store at -20°C in small aliquots to prevent freeze-thaw cycles.

Precautions

SCML2 Antibody (Center) is for research use only and not for use in diagnostic or therapeutic procedures.

SCML2 Antibody (Center) - Protein Information**Name** SCML2**Function** Putative Polycomb group (PcG) protein. PcG proteins act by forming multiprotein

complexes, which are required to maintain the transcriptionally repressive state of homeotic genes throughout development (By similarity).

Cellular Location

Nucleus.

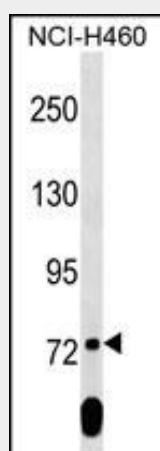
Tissue Location

Highly expressed in placenta, thymus and testis. Detected at lower levels in brain, liver, skeletal muscle, pancreas and ovary.

SCML2 Antibody (Center) - Protocols

Provided below are standard protocols that you may find useful for product applications.

- [Western Blot](#)
- [Blocking Peptides](#)
- [Dot Blot](#)
- [Immunohistochemistry](#)
- [Immunofluorescence](#)
- [Immunoprecipitation](#)
- [Flow Cytometry](#)
- [Cell Culture](#)

SCML2 Antibody (Center) - Images

SCML2 Antibody (Center) (Cat. #AP17829c) western blot analysis in NCI-H460 cell line lysates (35ug/lane). This demonstrates the SCML2 antibody detected the SCML2 protein (arrow).

SCML2 Antibody (Center) - Background

This gene encodes a member of the Polycomb group proteins. These proteins form the Polycomb repressive complexes which are involved in transcriptional repression. The encoded protein binds histone peptides that are monomethylated at lysine residues and may be involved in regulating homeotic gene expression during development.

SCML2 Antibody (Center) - References

Santiveri, C.M., et al. J. Mol. Biol. 382(5):1107-1112(2008)

Matsuoka, S., et al. Science 316(5828):1160-1166(2007)
Beausoleil, S.A., et al. Proc. Natl. Acad. Sci. U.S.A. 101(33):12130-12135(2004)
Sathyamurthy, A., et al. J. Biol. Chem. 278(47):46968-46973(2003)
Montini, E., et al. Genomics 58(1):65-72(1999)