

SHROOM2 Antibody (Center)
Affinity Purified Rabbit Polyclonal Antibody (Pab)
Catalog # AP17830C**Specification**

SHROOM2 Antibody (Center) - Product Information

Application	WB,E
Primary Accession	Q13796
Other Accession	NP_001640.1
Reactivity	Human
Host	Rabbit
Clonality	Polyclonal
Isotype	Rabbit IgG
Calculated MW	176410
Antigen Region	599-625

SHROOM2 Antibody (Center) - Additional Information**Gene ID** 357**Other Names**

Protein Shroom2, Apical-like protein, Protein APXL, SHROOM2, APXL

Target/Specificity

This SHROOM2 antibody is generated from rabbits immunized with a KLH conjugated synthetic peptide between 599-625 amino acids from the Central region of human SHROOM2.

Dilution

WB~~1:1000

E~~Use at an assay dependent concentration.

Format

Purified polyclonal antibody supplied in PBS with 0.09% (W/V) sodium azide. This antibody is purified through a protein A column, followed by peptide affinity purification.

Storage

Maintain refrigerated at 2-8°C for up to 2 weeks. For long term storage store at -20°C in small aliquots to prevent freeze-thaw cycles.

Precautions

SHROOM2 Antibody (Center) is for research use only and not for use in diagnostic or therapeutic procedures.

SHROOM2 Antibody (Center) - Protein Information**Name** SHROOM2**Synonyms** APXL

Function May be involved in endothelial cell morphology changes during cell spreading. In the retinal pigment epithelium, may regulate the biogenesis of melanosomes and promote their association with the apical cell surface by inducing gamma-tubulin redistribution (By similarity).

Cellular Location

Apical cell membrane. Cell junction, tight junction. Cytoplasm, cytoskeleton. Note=Associates with cortical F-actin.

Tissue Location

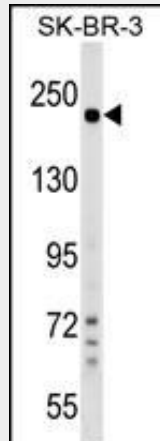
Abundant in retina and melanoma; also in brain, placenta, lung, kidney and pancreas

SHROOM2 Antibody (Center) - Protocols

Provided below are standard protocols that you may find useful for product applications.

- [Western Blot](#)
- [Blocking Peptides](#)
- [Dot Blot](#)
- [Immunohistochemistry](#)
- [Immunofluorescence](#)
- [Immunoprecipitation](#)
- [Flow Cytometry](#)
- [Cell Culture](#)

SHROOM2 Antibody (Center) - Images



SHROOM2 Antibody (Center) (Cat. #AP17830c) western blot analysis in SK-BR-3 cell line lysates (35ug/lane). This demonstrates the SHROOM2 antibody detected the SHROOM2 protein (arrow).

SHROOM2 Antibody (Center) - Background

The protein encoded by this gene shares significant similarities with the apical protein from *Xenopus laevis* which is implicated in amiloride-sensitive sodium channel activity. This gene is a strong candidate gene for ocular albinism type 1 syndrome.

SHROOM2 Antibody (Center) - References

Wu, C., et al. Proteomics 7(11):1775-1785(2007)

Olsen, J.V., et al. Cell 127(3):635-648(2006)
Olsen, J.V., et al. Cell 127(3):635-648(2006)
Dietz, M.L., et al. J. Biol. Chem. 281(29):20542-20554(2006)
Hagens, O., et al. BMC Cell Biol. 7, 18 (2006) :