

NOTUM Antibody (C-term)
Affinity Purified Rabbit Polyclonal Antibody (Pab)
Catalog # AP17837b

Specification

NOTUM Antibody (C-term) - Product Information

Application	WB,E
Primary Accession	Q6P988
Other Accession	NP_848588.3
Reactivity	Human
Host	Rabbit
Clonality	Polyclonal
Isotype	Rabbit IgG
Calculated MW	55699
Antigen Region	353-379

NOTUM Antibody (C-term) - Additional Information

Gene ID 147111

Other Names

Protein notum homolog, 3---, NOTUM

Target/Specificity

This NOTUM antibody is generated from rabbits immunized with a KLH conjugated synthetic peptide between 353-379 amino acids from the C-terminal region of human NOTUM.

Dilution

WB~~1:1000

Format

Purified polyclonal antibody supplied in PBS with 0.09% (W/V) sodium azide. This antibody is purified through a protein A column, followed by peptide affinity purification.

Storage

Maintain refrigerated at 2-8°C for up to 2 weeks. For long term storage store at -20°C in small aliquots to prevent freeze-thaw cycles.

Precautions

NOTUM Antibody (C-term) is for research use only and not for use in diagnostic or therapeutic procedures.

NOTUM Antibody (C-term) - Protein Information

Name NOTUM ([HGNC:27106](#))

Function Carboxylesterase that acts as a key negative regulator of the Wnt signaling pathway by specifically mediating depalmitoleoylation of WNT proteins. Serine palmitoleoylation of WNT

proteins is required for efficient binding to frizzled receptors (PubMed:[25731175](#)).

Cellular Location

Secreted {ECO:0000250|UniProtKB:Q9VUX3}.

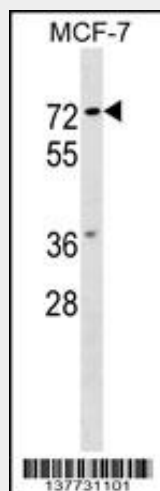
Tissue Location

Rarely expressed in adult normal tissues.

NOTUM Antibody (C-term) - Protocols

Provided below are standard protocols that you may find useful for product applications.

- [Western Blot](#)
- [Blocking Peptides](#)
- [Dot Blot](#)
- [Immunohistochemistry](#)
- [Immunofluorescence](#)
- [Immunoprecipitation](#)
- [Flow Cytometry](#)
- [Cell Culture](#)

NOTUM Antibody (C-term) - Images

NOTUM Antibody (C-term) (Cat. #AP17837b) western blot analysis in MCF-7 cell line lysates (35ug/lane). This demonstrates the NOTUM antibody detected the NOTUM protein (arrow).

NOTUM Antibody (C-term) - Background

NOTUM may deacetylate GlcNAc residues on cell surface glycans (Potential).

NOTUM Antibody (C-term) - References

Torisu, Y., et al. Cancer Sci. 99(6):1139-1146(2008)
Lamesch, P., et al. Genomics 89(3):307-315(2007)