

RG9MTD2 Antibody (Center)
Affinity Purified Rabbit Polyclonal Antibody (Pab)
Catalog # AP17846C**Specification**

RG9MTD2 Antibody (Center) - Product Information

Application	WB,E
Primary Accession	Q8TBZ6
Other Accession	NP_001128137.1
Reactivity	Human
Host	Rabbit
Clonality	Polyclonal
Isotype	Rabbit IgG
Calculated MW	39719
Antigen Region	199-225

RG9MTD2 Antibody (Center) - Additional Information**Gene ID** 93587**Other Names**

tRNA methyltransferase 10 homolog A, 211-, RNA (guanine-9-)-methyltransferase domain-containing protein 2, TRMT10A, RG9MTD2

Target/Specificity

This RG9MTD2 antibody is generated from rabbits immunized with a KLH conjugated synthetic peptide between 199-225 amino acids from the Central region of human RG9MTD2.

Dilution

WB~~1:1000

Format

Purified polyclonal antibody supplied in PBS with 0.09% (W/V) sodium azide. This antibody is purified through a protein A column, followed by peptide affinity purification.

Storage

Maintain refrigerated at 2-8°C for up to 2 weeks. For long term storage store at -20°C in small aliquots to prevent freeze-thaw cycles.

Precautions

RG9MTD2 Antibody (Center) is for research use only and not for use in diagnostic or therapeutic procedures.

RG9MTD2 Antibody (Center) - Protein Information**Name** TRMT10A**Synonyms** RG9MTD2

Function S-adenosyl-L-methionine-dependent guanine N(1)- methyltransferase that catalyzes the formation of N(1)-methylguanine at position 9 (m1G9) in tRNAs (PubMed:[23042678](#), PubMed:[25053765](#)). Probably not able to catalyze formation of N(1)-methyladenine at position 9 (m1A9) in tRNAs (PubMed:[23042678](#)).

Cellular Location

Nucleus. Nucleus, nucleolus

Tissue Location

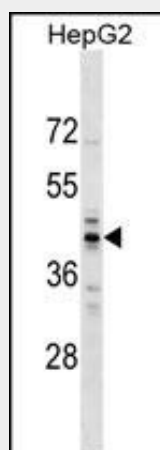
Expressed in embryonic and fetal brain. It is expressed throughout the dorsal telencephalon at 8 and 11 weeks of gestation, with highest expression in ventricular zone and marginal zone. Detected in cerebellar cortex and nuclei, but not in dorsal telencephalon, at later stages.

RG9MTD2 Antibody (Center) - Protocols

Provided below are standard protocols that you may find useful for product applications.

- [Western Blot](#)
- [Blocking Peptides](#)
- [Dot Blot](#)
- [Immunohistochemistry](#)
- [Immunofluorescence](#)
- [Immunoprecipitation](#)
- [Flow Cytometry](#)
- [Cell Culture](#)

RG9MTD2 Antibody (Center) - Images



RG9MTD2 Antibody (Center) (Cat. #AP17846c) western blot analysis in HepG2 cell line lysates (35ug/lane). This demonstrates the RG9MTD2 antibody detected the RG9MTD2 protein (arrow).

RG9MTD2 Antibody (Center) - Background

Probable RNA methyltransferase (By similarity).