

**THEM5 Antibody (Center)**  
**Affinity Purified Rabbit Polyclonal Antibody (Pab)**  
**Catalog # AP17858C****Specification**

---

**THEM5 Antibody (Center) - Product Information**

Application	WB,E
Primary Accession	<a href="#">O8N1Q8</a>
Other Accession	<a href="#">NP_872384.1</a>
Reactivity	Human
Host	Rabbit
Clonality	Polyclonal
Isotype	Rabbit IgG
Calculated MW	27677
Antigen Region	71-99

**THEM5 Antibody (Center) - Additional Information****Gene ID** 284486**Other Names**

Acyl-coenzyme A thioesterase THEM5, Acyl-CoA thioesterase THEM5, Acyl-coenzyme A thioesterase 15, Thioesterase superfamily member 5, THEM5, ACOT15

**Target/Specificity**

This THEM5 antibody is generated from rabbits immunized with a KLH conjugated synthetic peptide between 71-99 amino acids from the Central region of human THEM5.

**Dilution**

WB~~1:1000

**Format**

Purified polyclonal antibody supplied in PBS with 0.09% (W/V) sodium azide. This antibody is purified through a protein A column, followed by peptide affinity purification.

**Storage**

Maintain refrigerated at 2-8°C for up to 2 weeks. For long term storage store at -20°C in small aliquots to prevent freeze-thaw cycles.

**Precautions**

THEM5 Antibody (Center) is for research use only and not for use in diagnostic or therapeutic procedures.

**THEM5 Antibody (Center) - Protein Information****Name** THEM5**Synonyms** ACOT15

**Function** Has acyl-CoA thioesterase activity towards long-chain (C16 and C18) fatty acyl-CoA substrates, with a preference for linoleoyl-CoA and other unsaturated long-chain fatty acid-CoA esters (PubMed:[22586271](#)). Plays an important role in mitochondrial fatty acid metabolism, and in remodeling of the mitochondrial lipid cardiolipin (PubMed:[22586271](#)). Required for normal mitochondrial function (PubMed:[22586271](#)).

**Cellular Location**

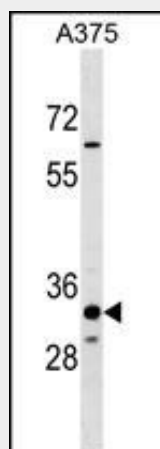
Mitochondrion matrix

**THEM5 Antibody (Center) - Protocols**

Provided below are standard protocols that you may find useful for product applications.

- [Western Blot](#)
- [Blocking Peptides](#)
- [Dot Blot](#)
- [Immunohistochemistry](#)
- [Immunofluorescence](#)
- [Immunoprecipitation](#)
- [Flow Cytometry](#)
- [Cell Culture](#)

**THEM5 Antibody (Center) - Images**



THEM5 Antibody (Center) (Cat. #AP17858c) western blot analysis in A375 cell line lysates (35ug/lane). This demonstrates the THEM5 antibody detected the THEM5 protein (arrow).

**THEM5 Antibody (Center) - Background**

THEM5 is an enzyme with hydrolase activity.

**THEM5 Antibody (Center) - References**

Davila, S., et al. Genes Immun. 11(3):232-238(2010)