

**THOC3 Antibody (N-term)**  
**Affinity Purified Rabbit Polyclonal Antibody (Pab)**  
**Catalog # AP17859a****Specification**

---

**THOC3 Antibody (N-term) - Product Information**

|                   |   |
|-------------------|---|
| Application       | WB,E  |
| Primary Accession | <a href="#">Q96J01</a>  |
| Other Accession   | <a href="#">Q8VE80</a> , <a href="#">Q29RH4</a> , <a href="#">NP_115737.1</a> |
| Reactivity        | Human   |
| Predicted         | Bovine, Mouse   |
| Host              | Rabbit  |
| Clonality         | Polyclonal  |
| Isotype           | Rabbit IgG  |
| Calculated MW     | 38772   |
| Antigen Region    | 71-98   |

**THOC3 Antibody (N-term) - Additional Information****Gene ID** 84321**Other Names**

THO complex subunit 3, Tho3, TEX1 homolog, hTREX45, THOC3

**Target/Specificity**

This THOC3 antibody is generated from rabbits immunized with a KLH conjugated synthetic peptide between 71-98 amino acids from the N-terminal region of human THOC3.

**Dilution**

WB~~1:1000

**Format**

Purified polyclonal antibody supplied in PBS with 0.09% (W/V) sodium azide. This antibody is purified through a protein A column, followed by peptide affinity purification.

**Storage**

Maintain refrigerated at 2-8°C for up to 2 weeks. For long term storage store at -20°C in small aliquots to prevent freeze-thaw cycles.

**Precautions**

THOC3 Antibody (N-term) is for research use only and not for use in diagnostic or therapeutic procedures.

**THOC3 Antibody (N-term) - Protein Information****Name** THOC3**Function** Required for efficient export of polyadenylated RNA and spliced mRNA. Acts as a

component of the THO subcomplex of the TREX complex which is thought to couple mRNA transcription, processing and nuclear export, and which specifically associates with spliced mRNA and not with unspliced pre-mRNA. TREX is recruited to spliced mRNAs by a transcription-independent mechanism, binds to mRNA upstream of the exon-junction complex (EJC) and is recruited in a splicing- and cap- dependent manner to a region near the 5' end of the mRNA where it functions in mRNA export to the cytoplasm via the TAP/NFX1 pathway. The TREX complex is essential for the export of Kaposi's sarcoma-associated herpesvirus (KSHV) intronless mRNAs and infectious virus production.

#### Cellular Location

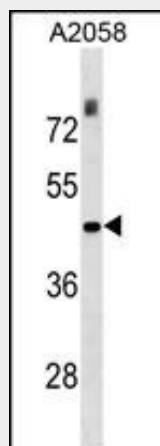
Nucleus. Nucleus speckle

### THOC3 Antibody (N-term) - Protocols

Provided below are standard protocols that you may find useful for product applications.

- [Western Blot](#)
- [Blocking Peptides](#)
- [Dot Blot](#)
- [Immunohistochemistry](#)
- [Immunofluorescence](#)
- [Immunoprecipitation](#)
- [Flow Cytometry](#)
- [Cell Culture](#)

### THOC3 Antibody (N-term) - Images



THOC3 Antibody (N-term) (Cat. #AP17859a) western blot analysis in A2058 cell line lysates (35ug/lane). This demonstrates the THOC3 antibody detected the THOC3 protein (arrow).

### THOC3 Antibody (N-term) - Background

TEX1 is part of the TREX (transcription/export) complex, which includes THO2 (MIM 300395), HPR1 (MIM 606930), ALY (MIM 604171), and UAP56 (MIM 142560).

### THOC3 Antibody (N-term) - References

Boyne, J.R., et al. PLoS Pathog. 4 (10), E1000194 (2008) :  
Cheng, H., et al. Cell 127(7):1389-1400(2006)

Masuda, S., et al. Genes Dev. 19(13):1512-1517(2005)  
Guo, S., et al. Cancer Res. 65(8):3011-3016(2005)  
Strasser, K., et al. Nature 417(6886):304-308(2002)