

ZC3H7A Antibody (Center)
Affinity Purified Rabbit Polyclonal Antibody (Pab)
Catalog # AP17863c**Specification**

ZC3H7A Antibody (Center) - Product Information

| | |
|-------------------|-----------------------------|
| Application | WB,E |
| Primary Accession | Q8IWR0 |
| Other Accession | NP_054872.2 |
| Reactivity | Human |
| Host | Rabbit |
| Clonality | Polyclonal |
| Isotype | Rabbit IgG |
| Calculated MW | 110538 |
| Antigen Region | 563-589 |

ZC3H7A Antibody (Center) - Additional Information**Gene ID** 29066**Other Names**

Zinc finger CCCH domain-containing protein 7A, ZC3H7A, ZC3H7, ZC3HDC7

Target/Specificity

This ZC3H7A antibody is generated from rabbits immunized with a KLH conjugated synthetic peptide between 563-589 amino acids from the Central region of human ZC3H7A.

Dilution

WB~~1:1000

E~~Use at an assay dependent concentration.

Format

Purified polyclonal antibody supplied in PBS with 0.09% (W/V) sodium azide. This antibody is purified through a protein A column, followed by peptide affinity purification.

Storage

Maintain refrigerated at 2-8°C for up to 2 weeks. For long term storage store at -20°C in small aliquots to prevent freeze-thaw cycles.

Precautions

ZC3H7A Antibody (Center) is for research use only and not for use in diagnostic or therapeutic procedures.

ZC3H7A Antibody (Center) - Protein Information**Name** ZC3H7A**Synonyms** ZC3H7, ZC3HDC7

Function May be a specific regulator of miRNA biogenesis. Binds to microRNAs MIR7-1, MIR16-2 and MIR29A hairpins recognizing the 3'- ATA(A/T)-5' motif in the apical loop.

Cellular Location

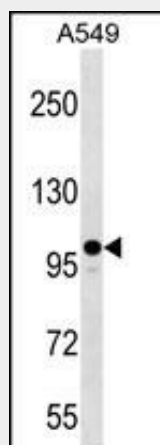
Nucleus.

ZC3H7A Antibody (Center) - Protocols

Provided below are standard protocols that you may find useful for product applications.

- [Western Blot](#)
- [Blocking Peptides](#)
- [Dot Blot](#)
- [Immunohistochemistry](#)
- [Immunofluorescence](#)
- [Immunoprecipitation](#)
- [Flow Cytometry](#)
- [Cell Culture](#)

ZC3H7A Antibody (Center) - Images



ZC3H7A Antibody (Center) (Cat. #AP17863c) western blot analysis in A549 cell line lysates (35ug/lane). This demonstrates the ZC3H7A antibody detected the ZC3H7A protein (arrow).

ZC3H7A Antibody (Center) - Background

ZC3H7A is part of a novel CCCH zinc finger protein family, which plays a role in the regulation of macrophage activation.

ZC3H7A Antibody (Center) - References

Newton-Cheh, C., et al. Nat. Genet. 41(4):399-406(2009)
Olsen, J.V., et al. Cell 127(3):635-648(2006)
Olsen, J.V., et al. Cell 127(3):635-648(2006)