

AGFG2 Antibody (Center)
Affinity Purified Rabbit Polyclonal Antibody (Pab)
Catalog # AP17880c**Specification**

AGFG2 Antibody (Center) - Product Information

Application	WB,E
Primary Accession	O95081
Other Accession	NP_006067.3
Reactivity	Human
Host	Rabbit
Clonality	Polyclonal
Isotype	Rabbit IgG
Calculated MW	48963
Antigen Region	101-130

AGFG2 Antibody (Center) - Additional Information**Gene ID** 3268**Other Names**

Arf-GAP domain and FG repeat-containing protein 2, HIV-1 Rev-binding protein-like protein, Rev/Rex activation domain-binding protein related, RAB-R, AGFG2, HRBL, RABR

Target/Specificity

This AGFG2 antibody is generated from rabbits immunized with a KLH conjugated synthetic peptide between 101-130 amino acids from the Central region of human AGFG2.

Dilution

WB~~1:1000

E~~Use at an assay dependent concentration.

Format

Purified polyclonal antibody supplied in PBS with 0.09% (W/V) sodium azide. This antibody is purified through a protein A column, followed by peptide affinity purification.

Storage

Maintain refrigerated at 2-8°C for up to 2 weeks. For long term storage store at -20°C in small aliquots to prevent freeze-thaw cycles.

Precautions

AGFG2 Antibody (Center) is for research use only and not for use in diagnostic or therapeutic procedures.

AGFG2 Antibody (Center) - Protein Information**Name** AGFG2

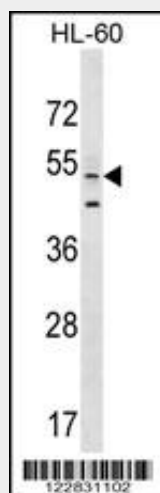
Synonyms HRBL, RABR

AGFG2 Antibody (Center) - Protocols

Provided below are standard protocols that you may find useful for product applications.

- [Western Blot](#)
- [Blocking Peptides](#)
- [Dot Blot](#)
- [Immunohistochemistry](#)
- [Immunofluorescence](#)
- [Immunoprecipitation](#)
- [Flow Cytometry](#)
- [Cell Culture](#)

AGFG2 Antibody (Center) - Images



AGFG2 Antibody (Center) (Cat. #AP17880c) western blot analysis in HL-60 cell line lysates (35ug/lane). This demonstrates the AGFG2 antibody detected the AGFG2 protein (arrow).

AGFG2 Antibody (Center) - Background

This gene is a member of the HIV-1 Rev binding protein (HRB) family and encodes a protein with one Arf-GAP zinc finger domain, several phe-gly (FG) motifs, and four asn-pro-phe (NPF) motifs. This protein interacts with Eps15 homology (EH) domains and plays a role in the Rev export pathway, which mediates the nucleocytoplasmic transfer of proteins and RNAs. Alternatively spliced transcript variants have been described, but their biological validity has not been determined. The 3' UTR of this gene contains an insulin receptor substrate 3-like pseudogene.

AGFG2 Antibody (Center) - References

Doria, M., et al. J. Cell Biol. 147(7):1379-1384(1999)
Glockner, G., et al. Genome Res. 8(10):1060-1073(1998)
Salcini, A.E., et al. Genes Dev. 11(17):2239-2249(1997)
Wong, W.T., et al. Proc. Natl. Acad. Sci. U.S.A. 92(21):9530-9534(1995)