

MARH3 Antibody (C-term)
Affinity Purified Rabbit Polyclonal Antibody (Pab)
Catalog # AP17902b**Specification**

MARH3 Antibody (C-term) - Product Information

Application	WB,E
Primary Accession	Q86UD3
Other Accession	Q5XIE5 , NP_848545.1
Reactivity	Human
Predicted	Rat
Host	Rabbit
Clonality	Polyclonal
Isotype	Rabbit IgG
Calculated MW	28504
Antigen Region	224-251

MARH3 Antibody (C-term) - Additional Information**Gene ID** 115123**Other Names**

E3 ubiquitin-protein ligase MARCH3, 632-, Membrane-associated RING finger protein 3, Membrane-associated RING-CH protein III, MARCH-III, RING finger protein 173, MARCH3, RNF173

Target/Specificity

This MARH3 antibody is generated from rabbits immunized with a KLH conjugated synthetic peptide between 224-251 amino acids from the C-terminal region of human MARH3.

Dilution

WB~~1:1000

Format

Purified polyclonal antibody supplied in PBS with 0.09% (W/V) sodium azide. This antibody is purified through a protein A column, followed by peptide affinity purification.

Storage

Maintain refrigerated at 2-8°C for up to 2 weeks. For long term storage store at -20°C in small aliquots to prevent freeze-thaw cycles.

Precautions

MARH3 Antibody (C-term) is for research use only and not for use in diagnostic or therapeutic procedures.

MARH3 Antibody (C-term) - Protein Information**Name** MARCHF3 ([HGNC:28728](#))

Synonyms MARCH3, RNF173

Function E3 ubiquitin-protein ligase which may be involved in endosomal trafficking. E3 ubiquitin ligases accept ubiquitin from an E2 ubiquitin-conjugating enzyme in the form of a thioester and then directly transfer the ubiquitin to targeted substrates.

Cellular Location

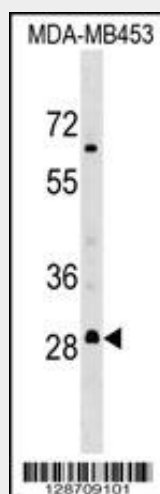
Cytoplasmic vesicle membrane; Multi-pass membrane protein. Early endosome membrane; Multi-pass membrane protein

MARH3 Antibody (C-term) - Protocols

Provided below are standard protocols that you may find useful for product applications.

- [Western Blot](#)
- [Blocking Peptides](#)
- [Dot Blot](#)
- [Immunohistochemistry](#)
- [Immunofluorescence](#)
- [Immunoprecipitation](#)
- [Flow Cytometry](#)
- [Cell Culture](#)

MARH3 Antibody (C-term) - Images



MARH3 Antibody (C-term) (Cat. #AP17902b) western blot analysis in MDA-MB453 cell line lysates (35ug/lane). This demonstrates the MARH3 antibody detected the MARH3 protein (arrow).

MARH3 Antibody (C-term) - Background

MARCH3 is a member of the MARCH family of membrane-bound E3 ubiquitin ligases (EC 6.3.2.19). MARCH proteins add ubiquitin (see MIM 191339) to target lysines in substrate proteins, thereby signaling their vesicular transport between membrane compartments. MARCH3 appears to function in the endosomal recycling pathway (Fukuda et al., 2006 [PubMed 16428329]).

MARH3 Antibody (C-term) - References

Fukuda, H., et al. J. Biochem. 139(1):137-145(2006)
Bartee, E., et al. J. Virol. 78(3):1109-1120(2004)