

INCA1 Antibody (N-term)
Affinity Purified Rabbit Polyclonal Antibody (Pab)
Catalog # AP17905a**Specification**

INCA1 Antibody (N-term) - Product Information

Application	WB,E
Primary Accession	Q0VD86
Other Accession	NP_001161457.1
Reactivity	Human, Mouse
Host	Rabbit
Clonality	Polyclonal
Isotype	Rabbit IgG
Calculated MW	26817
Antigen Region	14-42

INCA1 Antibody (N-term) - Additional Information**Gene ID** 388324**Other Names**

Protein INCA1, Inhibitor of CDK interacting with cyclin A1, INCA1

Target/Specificity

This INCA1 antibody is generated from rabbits immunized with a KLH conjugated synthetic peptide between 14-42 amino acids from the N-terminal region of human INCA1.

Dilution

WB~~1:1000

E~~Use at an assay dependent concentration.

Format

Purified polyclonal antibody supplied in PBS with 0.09% (W/V) sodium azide. This antibody is purified through a protein A column, followed by peptide affinity purification.

Storage

Maintain refrigerated at 2-8°C for up to 2 weeks. For long term storage store at -20°C in small aliquots to prevent freeze-thaw cycles.

Precautions

INCA1 Antibody (N-term) is for research use only and not for use in diagnostic or therapeutic procedures.

INCA1 Antibody (N-term) - Protein Information**Name** INCA1**Function** Binds to CDK2-bound cyclins and inhibits the kinase activity of CDK2; binding to cyclins

is critical for its function as CDK inhibitor (PubMed:[21540187](#)). Inhibits cell growth and cell proliferation and may play a role in cell cycle control (By similarity). Required for ING5-mediated regulation of S-phase progression, enhancement of Fas-induced apoptosis and inhibition of cell growth (By similarity).

Cellular Location

Nucleus. Cytoplasm

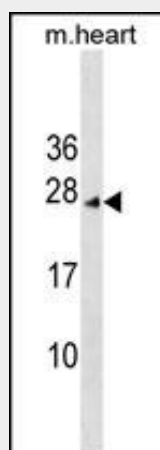
Tissue Location

Detected in testis, and at lower levels in ovary. Detected at very low levels in testis tumors (PubMed:15159402). Down- regulated in bone marrow cells in acute myeloid and lymphoid leukemia patients as compared with normal bone marrow cells (PubMed:21540187)

INCA1 Antibody (N-term) - Protocols

Provided below are standard protocols that you may find useful for product applications.

- [Western Blot](#)
- [Blocking Peptides](#)
- [Dot Blot](#)
- [Immunohistochemistry](#)
- [Immunofluorescence](#)
- [Immunoprecipitation](#)
- [Flow Cytometry](#)
- [Cell Culture](#)

INCA1 Antibody (N-term) - Images

INCA1 Antibody (N-term) (Cat. #AP17905a) western blot analysis in mouse heart tissue lysates (35ug/lane). This demonstrates the INCA1 antibody detected the INCA1 protein (arrow).

INCA1 Antibody (N-term) - Background

Belongs to the INCA family.