

Mouse Ryk Antibody (Center)
Affinity Purified Rabbit Polyclonal Antibody (Pab)
Catalog # AP17909c**Specification**

Mouse Ryk Antibody (Center) - Product Information

| | |
|-------------------|--------------------------------|
| Application | WB,E |
| Primary Accession | Q01887 |
| Other Accession | NP_001036072.1 |
| Reactivity | Human, Mouse |
| Host | Rabbit |
| Clonality | Polyclonal |
| Isotype | Rabbit IgG |
| Calculated MW | 66285 |
| Antigen Region | 321-348 |

Mouse Ryk Antibody (Center) - Additional Information**Gene ID** 20187**Other Names**

Tyrosine-protein kinase RYK, Kinase VIK, Met-related kinase, NYK-R, Ryk, Mrk

Target/Specificity

This Mouse Ryk antibody is generated from rabbits immunized with a KLH conjugated synthetic peptide between 321-348 amino acids from the Central region of mouse Ryk.

Dilution

WB~~1:1000

Format

Purified polyclonal antibody supplied in PBS with 0.09% (W/V) sodium azide. This antibody is purified through a protein A column, followed by peptide affinity purification.

Storage

Maintain refrigerated at 2-8°C for up to 2 weeks. For long term storage store at -20°C in small aliquots to prevent freeze-thaw cycles.

Precautions

Mouse Ryk Antibody (Center) is for research use only and not for use in diagnostic or therapeutic procedures.

Mouse Ryk Antibody (Center) - Protein Information**Name** Ryk**Synonyms** Mrk

Function May be a coreceptor along with FZD8 of Wnt proteins, such as WNT1, WNT3, WNT3A and WNT5A. Involved in neuron differentiation, axon guidance, corpus callosum establishment and neurite outgrowth. In response to WNT3 stimulation, receptor C-terminal cleavage occurs in its transmembrane region and allows the C-terminal intracellular product to translocate from the cytoplasm to the nucleus where it plays a crucial role in neuronal development.

Cellular Location

Membrane; Single- pass type I membrane protein. Nucleus. Cytoplasm Note=In cells that have undergone neuronal differentiation, the C- terminal cleaved part is translocated from the cytoplasm to the nucleus

Tissue Location

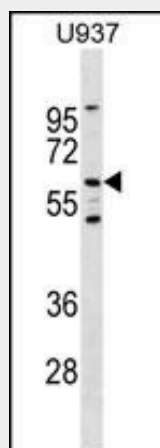
Is detected in all the tissues. Highest levels are seen in the ovary, lung and placenta

Mouse Ryk Antibody (Center) - Protocols

Provided below are standard protocols that you may find useful for product applications.

- [Western Blot](#)
- [Blocking Peptides](#)
- [Dot Blot](#)
- [Immunohistochemistry](#)
- [Immunofluorescence](#)
- [Immunoprecipitation](#)
- [Flow Cytometry](#)
- [Cell Culture](#)

Mouse Ryk Antibody (Center) - Images



Mouse Ryk Antibody (Center) (Cat. #AP17909c) western blot analysis in U937 cell line lysates (35ug/lane). This demonstrates the Ryk antibody detected the Ryk protein (arrow).

Mouse Ryk Antibody (Center) - Background

Ryk is potential growth factor receptor protein tyrosine kinase.

Mouse Ryk Antibody (Center) - References

Buchert, M., et al. PLoS Genet. 6 (1), E1000816 (2010) :
Lyu, J., et al. Dev. Cell 15(5):773-780(2008)

Tamplin, O.J., et al. BMC Genomics 9, 511 (2008) :
Keeble, T.R., et al. J. Neurosci. 26(21):5840-5848(2006)
Schmitt, A.M., et al. Nature 439(7072):31-37(2006)