

RNF207 Antibody (C-term)
Affinity Purified Rabbit Polyclonal Antibody (Pab)
Catalog # AP17923B

Specification

RNF207 Antibody (C-term) - Product Information

Application	WB,E
Primary Accession	Q6ZRF8
Other Accession	NP_997279.2
Reactivity	Human, Mouse
Host	Rabbit
Clonality	Polyclonal
Isotype	Rabbit IgG
Antigen Region	528-555

RNF207 Antibody (C-term) - Additional Information

Gene ID 388591

Other Names

RING finger protein 207, RNF207, C1orf188

Target/Specificity

This RNF207 antibody is generated from rabbits immunized with a KLH conjugated synthetic peptide between 528-555 amino acids from the C-terminal region of human RNF207.

Dilution

WB~~1:1000

Format

Purified polyclonal antibody supplied in PBS with 0.09% (W/V) sodium azide. This antibody is purified through a protein A column, followed by peptide affinity purification.

Storage

Maintain refrigerated at 2-8°C for up to 2 weeks. For long term storage store at -20°C in small aliquots to prevent freeze-thaw cycles.

Precautions

RNF207 Antibody (C-term) is for research use only and not for use in diagnostic or therapeutic procedures.

RNF207 Antibody (C-term) - Protein Information

Name RNF207

Synonyms C1orf188

Function Plays a role in cardiac repolarization possibly by stabilizing membrane expression of the

potassium channel KCNH2/HERG, or by assisting its synthesis, folding or export from the endoplasmic reticulum, in a heat shock protein-dependent manner.

Cellular Location

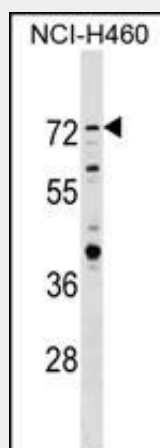
Cytoplasm. Note=Probably located in the endoplasmic reticulum and/or possibly the cis-Golgi apparatus.

RNF207 Antibody (C-term) - Protocols

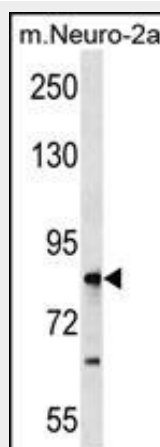
Provided below are standard protocols that you may find useful for product applications.

- [Western Blot](#)
- [Blocking Peptides](#)
- [Dot Blot](#)
- [Immunohistochemistry](#)
- [Immunofluorescence](#)
- [Immunoprecipitation](#)
- [Flow Cytometry](#)
- [Cell Culture](#)

RNF207 Antibody (C-term) - Images



RNF207 Antibody (C-term) (Cat. #AP17923b) western blot analysis in NCI-H460 cell line lysates (35ug/lane). This demonstrates the RNF207 antibody detected the RNF207 protein (arrow).



RNF207 Antibody (C-term) (Cat. #AP17923b) western blot analysis in mouse Neuro-2a tissue lysates (35ug/lane). This demonstrates the antibody detected the protein (arrow).

RNF207 Antibody (C-term) - Background

The function of this protein remains unknown.

RNF207 Antibody (C-term) - References

Pfeufer, A., et al. Nat. Genet. 41(4):407-414(2009)
Newton-Cheh, C., et al. Nat. Genet. 41(4):399-406(2009)
Wistow, G., et al. Mol. Vis. 8, 171-184 (2002) :