

STXBP6 Antibody (Center)
Affinity Purified Rabbit Polyclonal Antibody (Pab)
Catalog # AP17934c

Specification

STXBP6 Antibody (Center) - Product Information

Application	WB,E
Primary Accession	Q8NFX7
Other Accession	NP_054897.4
Reactivity	Human
Host	Rabbit
Clonality	Polyclonal
Isotype	Rabbit IgG
Calculated MW	23554
Antigen Region	71-97

STXBP6 Antibody (Center) - Additional Information

Gene ID 29091

Other Names

Syntaxin-binding protein 6, Amisyn, STXBP6

Target/Specificity

This STXBP6 antibody is generated from rabbits immunized with a KLH conjugated synthetic peptide between 71-97 amino acids from the Central region of human STXBP6.

Dilution

WB~~1:1000

Format

Purified polyclonal antibody supplied in PBS with 0.09% (W/V) sodium azide. This antibody is purified through a protein A column, followed by peptide affinity purification.

Storage

Maintain refrigerated at 2-8°C for up to 2 weeks. For long term storage store at -20°C in small aliquots to prevent freeze-thaw cycles.

Precautions

STXBP6 Antibody (Center) is for research use only and not for use in diagnostic or therapeutic procedures.

STXBP6 Antibody (Center) - Protein Information

Name STXBP6

Function Forms non-fusogenic complexes with SNAP25 and STX1A and may thereby modulate the formation of functional SNARE complexes and exocytosis.

Cellular Location

Cytoplasm. Membrane; Peripheral membrane protein

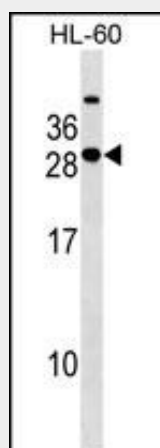
Tissue Location

Detected at low levels in brain, and at very low levels in heart, adrenal gland, testis, liver and kidney

STXBP6 Antibody (Center) - Protocols

Provided below are standard protocols that you may find useful for product applications.

- [Western Blot](#)
- [Blocking Peptides](#)
- [Dot Blot](#)
- [Immunohistochemistry](#)
- [Immunofluorescence](#)
- [Immunoprecipitation](#)
- [Flow Cytometry](#)
- [Cell Culture](#)

STXBP6 Antibody (Center) - Images

STXBP6 Antibody (Center) (Cat. #AP17934c) western blot analysis in HL-60 cell line lysates (35ug/lane). This demonstrates the STXBP6 antibody detected the STXBP6 protein (arrow).

STXBP6 Antibody (Center) - Background

STXBP6 binds components of the SNARE complex (see MIM 603215) and may be involved in regulating SNARE complex formation (Scales et al., 2002 [PubMed 12145319]).

STXBP6 Antibody (Center) - References

Rose, J. Phd, et al. Mol. Med. (2010) In press :
Heilig, R., et al. Nature 421(6923):601-607(2003)
Scales, S.J., et al. J. Biol. Chem. 277(31):28271-28279(2002)