

**TEX2 Antibody (Center)**  
**Affinity Purified Rabbit Polyclonal Antibody (Pab)**  
**Catalog # AP17935c****Specification**

---

**TEX2 Antibody (Center) - Product Information**

Application	WB,E
Primary Accession	<a href="#">Q8IWB9</a>
Other Accession	<a href="#">NP_060939.3</a>
Reactivity	Human
Host	Rabbit
Clonality	Polyclonal
Isotype	Rabbit IgG
Calculated MW	125303
Antigen Region	571-599

**TEX2 Antibody (Center) - Additional Information****Gene ID** 55852**Other Names**

Testis-expressed sequence 2 protein, Transmembrane protein 96, TEX2, KIAA1738, TMEM96

**Target/Specificity**

This TEX2 antibody is generated from rabbits immunized with a KLH conjugated synthetic peptide between 571-599 amino acids from the Central region of human TEX2.

**Dilution**

WB~~1:1000

E~~Use at an assay dependent concentration.

**Format**

Purified polyclonal antibody supplied in PBS with 0.09% (W/V) sodium azide. This antibody is purified through a protein A column, followed by peptide affinity purification.

**Storage**

Maintain refrigerated at 2-8°C for up to 2 weeks. For long term storage store at -20°C in small aliquots to prevent freeze-thaw cycles.

**Precautions**

TEX2 Antibody (Center) is for research use only and not for use in diagnostic or therapeutic procedures.

**TEX2 Antibody (Center) - Protein Information****Name** TEX2**Synonyms** KIAA1738, TMEM96

**Function** During endoplasmic reticulum (ER) stress or when cellular ceramide levels increase, may induce contacts between the ER and medial-Golgi complex to facilitate non-vesicular transport of ceramides from the ER to the Golgi complex where they are converted to complex sphingolipids, preventing toxic ceramide accumulation.

#### **Cellular Location**

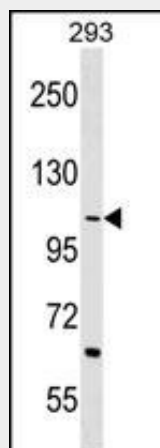
Endoplasmic reticulum membrane {ECO:0000250|UniProtKB:Q06833}; Multi-pass membrane protein. Nucleus membrane {ECO:0000250|UniProtKB:Q06833}; Multi-pass membrane protein. Note=Enriched at the nucleus- vacuole junction (PubMed:22250200). During endoplasmic reticulum (ER) stress, localizes to ER-Golgi contacts (By similarity) {ECO:0000250|UniProtKB:Q06833, ECO:0000269|PubMed:22250200}

### **TEX2 Antibody (Center) - Protocols**

Provided below are standard protocols that you may find useful for product applications.

- [Western Blot](#)
- [Blocking Peptides](#)
- [Dot Blot](#)
- [Immunohistochemistry](#)
- [Immunofluorescence](#)
- [Immunoprecipitation](#)
- [Flow Cytometry](#)
- [Cell Culture](#)

### **TEX2 Antibody (Center) - Images**



TEX2 Antibody (Center) (Cat. #AP17935c) western blot analysis in 293 cell line lysates (35ug/lane). This demonstrates the TEX2 antibody detected the TEX2 protein (arrow).

### **TEX2 Antibody (Center) - Background**

There are two isoforms.

### **TEX2 Antibody (Center) - References**

Lee, I., et al. FASEB J. 20(2):202-206(2006)