

SEPT10 Antibody (N-term)
Affinity Purified Rabbit Polyclonal Antibody (Pab)
Catalog # AP17950a

Specification

SEPT10 Antibody (N-term) - Product Information

Application	WB,E
Primary Accession	O9P0V9
Other Accession	NP_653311.1 , NP_848699.1
Reactivity	Human
Host	Rabbit
Clonality	Polyclonal
Isotype	Rabbit IgG
Calculated MW	52593
Antigen Region	14-40

SEPT10 Antibody (N-term) - Additional Information

Gene ID 151011

Other Names

Septin-10, SEPT10

Target/Specificity

This SEPT10 antibody is generated from rabbits immunized with a KLH conjugated synthetic peptide between 14-40 amino acids from the N-terminal region of human SEPT10.

Dilution

WB~~1:1000

E~~Use at an assay dependent concentration.

Format

Purified polyclonal antibody supplied in PBS with 0.09% (W/V) sodium azide. This antibody is purified through a protein A column, followed by peptide affinity purification.

Storage

Maintain refrigerated at 2-8°C for up to 2 weeks. For long term storage store at -20°C in small aliquots to prevent freeze-thaw cycles.

Precautions

SEPT10 Antibody (N-term) is for research use only and not for use in diagnostic or therapeutic procedures.

SEPT10 Antibody (N-term) - Protein Information

Name SEPTIN10 ([HGNC:14349](#))

Synonyms SEPT10

Function Filament-forming cytoskeletal GTPase. May play a role in cytokinesis (Potential).

Cellular Location

Cytoplasm. Cytoplasm, cytoskeleton. Cell projection, cilium, flagellum {ECO:0000250|UniProtKB:Q8C650}. Note=Detected in the annulus of the sperm flagellum and in the neck region in spermatids and mature sperm (By similarity). Using a GFP-fusion protein, detected in the nucleus. {ECO:0000250|UniProtKB:Q8C650, ECO:0000269|PubMed:12711328}

Tissue Location

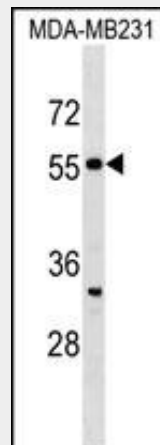
Widely expressed. Abundantly expressed in heart and kidney, placenta, skeletal muscles, liver and lung, as well as various tumor cell lines.

SEPT10 Antibody (N-term) - Protocols

Provided below are standard protocols that you may find useful for product applications.

- [Western Blot](#)
- [Blocking Peptides](#)
- [Dot Blot](#)
- [Immunohistochemistry](#)
- [Immunofluorescence](#)
- [Immunoprecipitation](#)
- [Flow Cytometry](#)
- [Cell Culture](#)

SEPT10 Antibody (N-term) - Images



SEPT10 Antibody (N-term) (Cat. #AP17950a) western blot analysis in MDA-MB231 cell line lysates (35ug/lane). This demonstrates the SEPT10 antibody detected the SEPT10 protein (arrow).

SEPT10 Antibody (N-term) - Background

This gene encodes a member of the septin family of cytoskeletal proteins with GTPase activity. This protein localizes to the cytoplasm and nucleus and displays GTP-binding and GTPase activity. Alternate splicing results in two transcript variants encoding different isoforms.

SEPT10 Antibody (N-term) - References

Benedetti, D., et al. Leukemia 22(1):224-226(2008)
Lamesch, P., et al. Genomics 89(3):307-315(2007)
Hillier, L.W., et al. Nature 434(7034):724-731(2005)
Sui, L., et al. Biochem. Biophys. Res. Commun. 304(2):393-398(2003)