

ACTL8 Antibody (Center)
Affinity Purified Rabbit Polyclonal Antibody (Pab)
Catalog # AP17953c

Specification

ACTL8 Antibody (Center) - Product Information

Application	WB,E
Primary Accession	O9H568
Other Accession	NP_110439.2
Reactivity	Human
Host	Rabbit
Clonality	Polyclonal
Isotype	Rabbit IgG
Calculated MW	41360
Antigen Region	166-192

ACTL8 Antibody (Center) - Additional Information

Gene ID 81569

Other Names

Actin-like protein 8, Cancer/testis antigen 57, CT57, ACTL8

Target/Specificity

This ACTL8 antibody is generated from rabbits immunized with a KLH conjugated synthetic peptide between 166-192 amino acids from the Central region of human ACTL8.

Dilution

WB~~1:1000

E~~Use at an assay dependent concentration.

Format

Purified polyclonal antibody supplied in PBS with 0.09% (W/V) sodium azide. This antibody is purified through a protein A column, followed by peptide affinity purification.

Storage

Maintain refrigerated at 2-8°C for up to 2 weeks. For long term storage store at -20°C in small aliquots to prevent freeze-thaw cycles.

Precautions

ACTL8 Antibody (Center) is for research use only and not for use in diagnostic or therapeutic procedures.

ACTL8 Antibody (Center) - Protein Information

Name ACTL8

Cellular Location

Cytoplasm, cytoskeleton.

Tissue Location

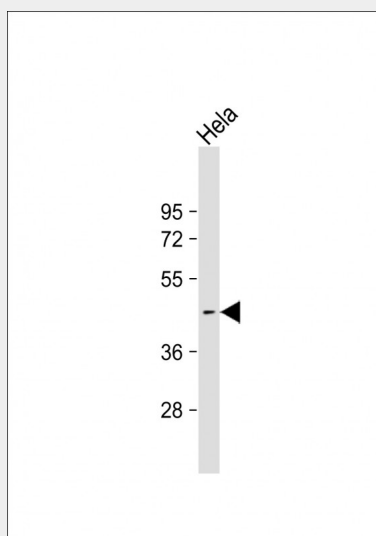
Strongly expressed in testis and pancreas. Weak expression in placenta.

ACTL8 Antibody (Center) - Protocols

Provided below are standard protocols that you may find useful for product applications.

- [Western Blot](#)
- [Blocking Peptides](#)
- [Dot Blot](#)
- [Immunohistochemistry](#)
- [Immunofluorescence](#)
- [Immunoprecipitation](#)
- [Flow Cytometry](#)
- [Cell Culture](#)

ACTL8 Antibody (Center) - Images



Anti-ACTL8 Antibody (Center) at 1:1000 dilution + HeLa whole cell lysate Lysates/proteins at 20 μ g per lane. Secondary Goat Anti-Rabbit IgG, (H+L), Peroxidase conjugated at 1/10000 dilution. Predicted band size : 41 kDa Blocking/Dilution buffer: 5% NFDN/TBST.

ACTL8 Antibody (Center) - Background

Belongs to the actin family.

ACTL8 Antibody (Center) - References

Ota, T., et al. Nat. Genet. 36(1):40-45(2004)