

BEX4 Antibody (Center)
Affinity Purified Rabbit Polyclonal Antibody (Pab)
Catalog # AP17957c**Specification**

BEX4 Antibody (Center) - Product Information

Application	WB,E
Primary Accession	O9NWD9
Other Accession	NP_001121160.1
Reactivity	Human
Host	Rabbit
Clonality	Polyclonal
Isotype	Rabbit IgG
Calculated MW	14067
Antigen Region	54-82

BEX4 Antibody (Center) - Additional Information**Gene ID** 56271**Other Names**

Protein BEX4, BEX1-like protein 1, Brain-expressed X-linked protein 4, Nerve growth factor receptor-associated protein 3, BEX4, BEXL1, NADE3

Target/Specificity

This BEX4 antibody is generated from rabbits immunized with a KLH conjugated synthetic peptide between 54-82 amino acids from the Central region of human BEX4.

Dilution

WB~~1:1000

E~~Use at an assay dependent concentration.

Format

Purified polyclonal antibody supplied in PBS with 0.09% (W/V) sodium azide. This antibody is purified through a protein A column, followed by peptide affinity purification.

Storage

Maintain refrigerated at 2-8°C for up to 2 weeks. For long term storage store at -20°C in small aliquots to prevent freeze-thaw cycles.

Precautions

BEX4 Antibody (Center) is for research use only and not for use in diagnostic or therapeutic procedures.

BEX4 Antibody (Center) - Protein Information**Name** BEX4 {ECO:0000303|PubMed:15958283, ECO:0000312|HGNC:HGNC:25475}

Function May play a role in microtubule deacetylation by negatively regulating the SIRT2 deacetylase activity toward alpha-tubulin and thereby participate in the control of cell cycle progression and genomic stability (PubMed:[27512957](#)). In absence of reductive stress, acts as a pseudosubstrate for the CRL2(FEM1B) complex: associates with FEM1B via zinc, thereby preventing association between FEM1B and its substrates (By similarity).

Cellular Location

Cytoplasm, cytoskeleton, spindle pole. Nucleus Cytoplasm. Note=Also localizes to microtubules.

Tissue Location

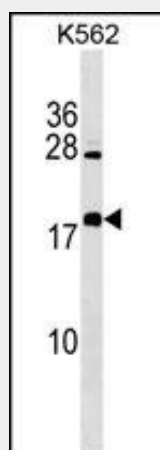
Very high expression in heart, skeletal muscle, liver, and kidney. The levels of expression are uniform throughout the brain.

BEX4 Antibody (Center) - Protocols

Provided below are standard protocols that you may find useful for product applications.

- [Western Blot](#)
- [Blocking Peptides](#)
- [Dot Blot](#)
- [Immunohistochemistry](#)
- [Immunofluorescence](#)
- [Immunoprecipitation](#)
- [Flow Cytometry](#)
- [Cell Culture](#)

BEX4 Antibody (Center) - Images



BEX4 Antibody (Center) (Cat. #AP17957c) western blot analysis in K562 cell line lysates (35ug/lane). This demonstrates the BEX4 antibody detected the BEX4 protein (arrow).

BEX4 Antibody (Center) - Background

Bex proteins are expressed from a family of "brain expressed X-linked genes".

BEX4 Antibody (Center) - References

Alvarez, E., et al. Gene 357(1):18-28(2005)
Ross, M.T., et al. Nature 434(7031):325-337(2005)