

**GRPEL1 Antibody (Center)**  
**Affinity Purified Rabbit Polyclonal Antibody (Pab)**  
**Catalog # AP17977c**

**Specification**

---

**GRPEL1 Antibody (Center) - Product Information**

Application	WB,E
Primary Accession	<a href="#">Q9HAV7</a>
Other Accession	<a href="#">NP_079472.1</a>
Reactivity	Human
Host	Rabbit
Clonality	Polyclonal
Isotype	Rabbit IgG
Calculated MW	24279
Antigen Region	116-142

**GRPEL1 Antibody (Center) - Additional Information**

**Gene ID** 80273

**Other Names**

GrpE protein homolog 1, mitochondrial, HMGE, Mt-GrpE#1, GRPEL1, GREPEL1

**Target/Specificity**

This GRPEL1 antibody is generated from rabbits immunized with a KLH conjugated synthetic peptide between 116-142 amino acids from the Central region of human GRPEL1.

**Dilution**

WB~~1:1000

E~~Use at an assay dependent concentration.

**Format**

Purified polyclonal antibody supplied in PBS with 0.09% (W/V) sodium azide. This antibody is purified through a protein A column, followed by peptide affinity purification.

**Storage**

Maintain refrigerated at 2-8°C for up to 2 weeks. For long term storage store at -20°C in small aliquots to prevent freeze-thaw cycles.

**Precautions**

GRPEL1 Antibody (Center) is for research use only and not for use in diagnostic or therapeutic procedures.

**GRPEL1 Antibody (Center) - Protein Information**

**Name** GRPEL1

**Synonyms** GREPEL1

**Function** Essential component of the PAM complex, a complex required for the translocation of transit peptide-containing proteins from the inner membrane into the mitochondrial matrix in an ATP-dependent manner (By similarity). Seems to control the nucleotide-dependent binding of mitochondrial HSP70 to substrate proteins (PubMed:[11311562](#)).

**Cellular Location**

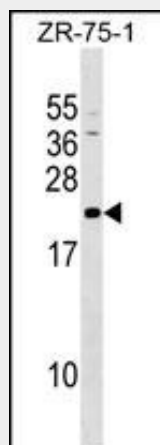
Mitochondrion matrix

**GRPEL1 Antibody (Center) - Protocols**

Provided below are standard protocols that you may find useful for product applications.

- [Western Blot](#)
- [Blocking Peptides](#)
- [Dot Blot](#)
- [Immunohistochemistry](#)
- [Immunofluorescence](#)
- [Immunoprecipitation](#)
- [Flow Cytometry](#)
- [Cell Culture](#)

**GRPEL1 Antibody (Center) - Images**



GRPEL1 Antibody (Center) (Cat. #AP17977c) western blot analysis in ZR-75-1 cell line lysates (35ug/lane). This demonstrates the GRPEL1 antibody detected the GRPEL1 protein (arrow).

**GRPEL1 Antibody (Center) - Background**

Essential component of the PAM complex, a complex required for the translocation of transit peptide-containing proteins from the inner membrane into the mitochondrial matrix in an ATP-dependent manner. Seems to control the nucleotide-dependent binding of mitochondrial HSP70 to substrate proteins.

**GRPEL1 Antibody (Center) - References**

Borges, J.C., et al. J. Biol. Chem. 278(37):35337-35344(2003)  
Choglay, A.A., et al. Gene 267(1):125-134(2001)