

**IFT27 Antibody (C-term)**  
**Affinity Purified Rabbit Polyclonal Antibody (Pab)**  
**Catalog # AP17978b**

**Specification**

---

**IFT27 Antibody (C-term) - Product Information**

Application	WB,E
Primary Accession	<a href="#">O9BW83</a>
Other Accession	<a href="#">NP_001171172.1</a>
Reactivity	Human
Host	Rabbit
Clonality	Polyclonal
Isotype	Rabbit IgG
Antigen Region	157-183

**IFT27 Antibody (C-term) - Additional Information**

**Gene ID** 11020

**Other Names**

Intraflagellar transport protein 27 homolog, Putative GTP-binding protein RAY-like, Rab-like protein 4, IFT27, RABL4, RAYL

**Target/Specificity**

This IFT27 antibody is generated from rabbits immunized with a KLH conjugated synthetic peptide between 157-183 amino acids of human IFT27.

**Dilution**

WB~~1:1000

**Format**

Purified polyclonal antibody supplied in PBS with 0.09% (W/V) sodium azide. This antibody is purified through a protein A column, followed by peptide affinity purification.

**Storage**

Maintain refrigerated at 2-8°C for up to 2 weeks. For long term storage store at -20°C in small aliquots to prevent freeze-thaw cycles.

**Precautions**

IFT27 Antibody (C-term) is for research use only and not for use in diagnostic or therapeutic procedures.

**IFT27 Antibody (C-term) - Protein Information**

**Name** IFT27

**Synonyms** RABL4, RAYL

**Function** Small GTPase-like component of the intraflagellar transport (IFT) complex B that promotes the exit of the BBSome complex from cilia via its interaction with ARL6 (PubMed:[25443296](#)). Not involved in entry of the BBSome complex into cilium. Prevents aggregation of GTP-free ARL6 (PubMed:[25443296](#)). Required for hedgehog signaling. Forms a subcomplex within the IFT complex B with IFT25. Its role in intraflagellar transport is mainly seen in tissues rich in ciliated cells such as kidney and testis. Essential for male fertility, spermiogenesis and sperm flagella formation. Plays a role in the early development of the kidney. May be involved in the regulation of ureteric bud initiation (By similarity).

#### Cellular Location

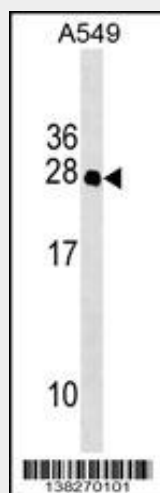
Cell projection, cilium. Cytoplasm {ECO:0000250|UniProtKB:Q9D0P8}. Cell projection, cilium, flagellum {ECO:0000250|UniProtKB:Q9D0P8}. Note=Localizes to the sperm flagellum {ECO:0000250|UniProtKB:Q9D0P8}

#### IFT27 Antibody (C-term) - Protocols

Provided below are standard protocols that you may find useful for product applications.

- [Western Blot](#)
- [Blocking Peptides](#)
- [Dot Blot](#)
- [Immunohistochemistry](#)
- [Immunofluorescence](#)
- [Immunoprecipitation](#)
- [Flow Cytometry](#)
- [Cell Culture](#)

#### IFT27 Antibody (C-term) - Images



IFT27 Antibody (C-term) (Cat. #AP17978b) western blot analysis in A549 cell line lysates (35ug/lane). This demonstrates the IFT27 antibody detected the IFT27 protein (arrow).

#### IFT27 Antibody (C-term) - Background

This gene encodes a putative GTP-binding protein similar to RAY/RAB1C. The protein is ras-related, but the function is unknown. Several transcript variants encoding different isoforms have been found for this gene.

**IFT27 Antibody (C-term) - References**

Qin, H., et al. Curr. Biol. 17(3):193-202(2007)  
Collins, J.E., et al. Genome Biol. 5 (10), R84 (2004) :  
Collins, J.E., et al. Genome Res. 13(1):27-36(2003)  
Dunham, I., et al. Nature 402(6761):489-495(1999)