

JRKL Antibody (C-term)
Affinity Purified Rabbit Polyclonal Antibody (Pab)
Catalog # AP17980b**Specification**

JRKL Antibody (C-term) - Product Information

Application	WB,E
Primary Accession	O9Y4A0
Other Accession	NP_003763.2
Reactivity	Human
Host	Rabbit
Clonality	Polyclonal
Isotype	Rabbit IgG
Calculated MW	59912
Antigen Region	412-439

JRKL Antibody (C-term) - Additional Information**Gene ID** 8690**Other Names**

Jerky protein homolog-like, Human homolog of mouse jerky gene protein, HHMJG, JRKL

Target/Specificity

This JRKL antibody is generated from rabbits immunized with a KLH conjugated synthetic peptide between 412-439 amino acids from the C-terminal region of human JRKL.

Dilution

WB~~1:1000

E~~Use at an assay dependent concentration.

Format

Purified polyclonal antibody supplied in PBS with 0.09% (W/V) sodium azide. This antibody is purified through a protein A column, followed by peptide affinity purification.

Storage

Maintain refrigerated at 2-8°C for up to 2 weeks. For long term storage store at -20°C in small aliquots to prevent freeze-thaw cycles.

Precautions

JRKL Antibody (C-term) is for research use only and not for use in diagnostic or therapeutic procedures.

JRKL Antibody (C-term) - Protein Information**Name** JRKL**Cellular Location**

Nucleus {ECO:0000255|PROSITE-ProRule:PRU00320, ECO:0000255|PROSITE-ProRule:PRU00583}

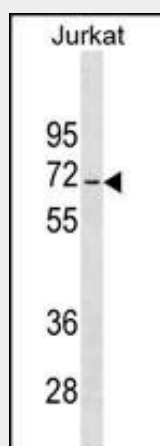
Tissue Location

Abundantly expressed in the majority of tissues examined, including brain and skeletal muscle

JRKL Antibody (C-term) - Protocols

Provided below are standard protocols that you may find useful for product applications.

- [Western Blot](#)
- [Blocking Peptides](#)
- [Dot Blot](#)
- [Immunohistochemistry](#)
- [Immunofluorescence](#)
- [Immunoprecipitation](#)
- [Flow Cytometry](#)
- [Cell Culture](#)

JRKL Antibody (C-term) - Images

JRKL Antibody (C-term) (Cat. #AP17980b) western blot analysis in Jurkat cell line lysates (35ug/lane). This demonstrates the JRKL antibody detected the JRKL protein (arrow).

JRKL Antibody (C-term) - Background

The function of this gene has not yet been defined, however, the encoded protein shares similarity with the human (41% identical) and mouse (34% identical) jerky gene products. This protein may act as a nuclear regulatory protein. [provided by RefSeq].

JRKL Antibody (C-term) - References

Zeng, Z., et al. Biochem. Biophys. Res. Commun. 236(2):389-395(1997)