

CENPE Antibody (C-term)
Affinity Purified Rabbit Polyclonal Antibody (Pab)
Catalog # AP17985b**Specification**

CENPE Antibody (C-term) - Product Information

| | |
|-------------------|---------------------------|
| Application | WB,E |
| Primary Accession | Q02224 |
| Other Accession | NP_001804 |
| Reactivity | Human |
| Host | Rabbit |
| Clonality | Polyclonal |
| Isotype | Rabbit IgG |
| Calculated MW | 316415 |
| Antigen Region | 2573-2601 |

CENPE Antibody (C-term) - Additional Information**Gene ID** 1062**Other Names**

Centromere-associated protein E, Centromere protein E, CENP-E, Kinesin-related protein CENPE, CENPE

Target/Specificity

This CENPE antibody is generated from rabbits immunized with a KLH conjugated synthetic peptide between 2573-2601 amino acids from the C-terminal region of human CENPE.

Dilution

WB~~1:1000

Format

Purified polyclonal antibody supplied in PBS with 0.09% (W/V) sodium azide. This antibody is purified through a protein A column, followed by peptide affinity purification.

Storage

Maintain refrigerated at 2-8°C for up to 2 weeks. For long term storage store at -20°C in small aliquots to prevent freeze-thaw cycles.

Precautions

CENPE Antibody (C-term) is for research use only and not for use in diagnostic or therapeutic procedures.

CENPE Antibody (C-term) - Protein Information**Name** CENPE**Function** Microtubule plus-end-directed kinetochore motor which plays an important role in

chromosome congression, microtubule-kinetochore conjugation and spindle assembly checkpoint activation. Drives chromosome congression (alignment of chromosomes at the spindle equator resulting in the formation of the metaphase plate) by mediating the lateral sliding of polar chromosomes along spindle microtubules towards the spindle equator and by aiding the establishment and maintenance of connections between kinetochores and spindle microtubules (PubMed:[7889940](#), PubMed:[23891108](#), PubMed:[25395579](#)). The transport of pole-proximal chromosomes towards the spindle equator is favored by microtubule tracks that are deetyrosinated (PubMed:[25908662](#)). Acts as a processive bi-directional tracker of dynamic microtubule tips; after chromosomes have congressed, continues to play an active role at kinetochores, enhancing their links with dynamic microtubule ends (PubMed:[23955301](#)). Suppresses chromosome congression in NDC80-depleted cells and contributes positively to congression only when microtubules are stabilized (PubMed:[25743205](#)). Plays an important role in the formation of stable attachments between kinetochores and spindle microtubules (PubMed:[17535814](#)). The stabilization of kinetochore- microtubule attachment also requires CENPE-dependent localization of other proteins to the kinetochore including BUB1B, MAD1 and MAD2. Plays a role in spindle assembly checkpoint activation (SAC) via its interaction with BUB1B resulting in the activation of its kinase activity, which is important for activating SAC. Necessary for the mitotic checkpoint signal at individual kinetochores to prevent aneuploidy due to single chromosome loss (By similarity).

Cellular Location

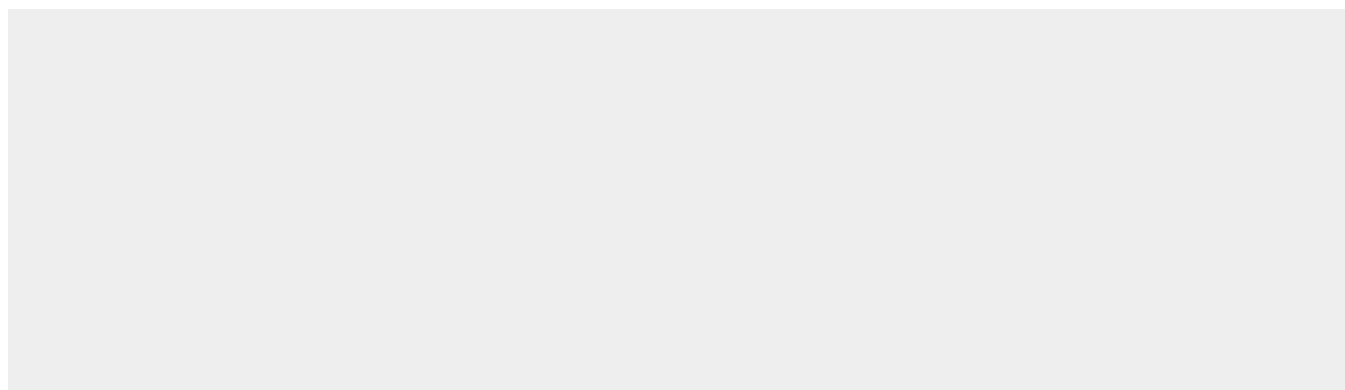
Chromosome, centromere, kinetochore. Cytoplasm, cytoskeleton, spindle. Chromosome, centromere. Note=Associates with kinetochores during congression (as early as prometaphase), relocates to the spindle midzone at anaphase, and is quantitatively discarded at the end of the cell division (By similarity). Recruited to the kinetochore in a SEPT7, CENPQ and TRAPPC12-dependent manner (PubMed:18460473, PubMed:25918224, PubMed:25395579). Recruited to the pericentromeric/centromeric regions of the chromosome in a CTCF- dependent manner (PubMed:26321640). {ECO:0000250|UniProtKB:Q6RT24, ECO:0000269|PubMed:18460473, ECO:0000269|PubMed:25395579, ECO:0000269|PubMed:25918224, ECO:0000269|PubMed:26321640}

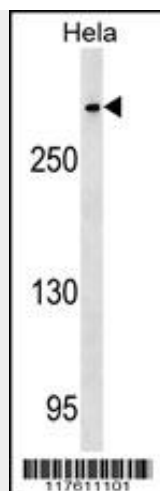
CENPE Antibody (C-term) - Protocols

Provided below are standard protocols that you may find useful for product applications.

- [Western Blot](#)
- [Blocking Peptides](#)
- [Dot Blot](#)
- [Immunohistochemistry](#)
- [Immunofluorescence](#)
- [Immunoprecipitation](#)
- [Flow Cytometry](#)
- [Cell Culture](#)

CENPE Antibody (C-term) - Images





CENPE Antibody (C-term) (Cat. #AP17985b) western blot analysis in HeLa cell line lysates (35ug/lane). This demonstrates the CENPE antibody detected the CENPE protein (arrow).

CENPE Antibody (C-term) - Background

Centrosome-associated protein E is a kinesin-like motor protein that accumulates in the G2 phase of the cell cycle. Unlike other centrosome-associated proteins, it is not present during interphase and first appears at the centromere region of chromosomes during prometaphase. CENPE is proposed to be one of the motors responsible for mammalian chromosome movement and/or spindle elongation.

CENPE Antibody (C-term) - References

- Kim, Y., et al. Cell 142(3):444-455(2010)
- Maia, A.F., et al. Chromosoma 119(4):405-413(2010)
- Kalsi, G., et al. Hum. Mol. Genet. 19(12):2497-2506(2010)
- Maffini, S., et al. Curr. Biol. 19(18):1566-1572(2009)
- Liu, Z., et al. J. Exp. Clin. Cancer Res. 28, 156 (2009) :