

DLEC1 Antibody (Center)
Affinity Purified Rabbit Polyclonal Antibody (Pab)
Catalog # AP17986c**Specification**

DLEC1 Antibody (Center) - Product Information

Application	WB,E
Primary Accession	O9Y238
Other Accession	NP_031361
Reactivity	Human
Host	Rabbit
Clonality	Polyclonal
Isotype	Rabbit IgG
Calculated MW	195684
Antigen Region	879-908

DLEC1 Antibody (Center) - Additional Information**Gene ID** 9940**Other Names**

Deleted in lung and esophageal cancer protein 1, Deleted in lung cancer protein 1, DLC-1, DLEC1
{ECO:0000312|EMBL:BAA776241}

Target/Specificity

This DLEC1 antibody is generated from rabbits immunized with a KLH conjugated synthetic peptide between 879-908 amino acids from the Central region of human DLEC1.

Dilution

WB~~1:1000

E~~Use at an assay dependent concentration.

Format

Purified polyclonal antibody supplied in PBS with 0.09% (W/V) sodium azide. This antibody is purified through a protein A column, followed by peptide affinity purification.

Storage

Maintain refrigerated at 2-8°C for up to 2 weeks. For long term storage store at -20°C in small aliquots to prevent freeze-thaw cycles.

Precautions

DLEC1 Antibody (Center) is for research use only and not for use in diagnostic or therapeutic procedures.

DLEC1 Antibody (Center) - Protein Information**Name** DLEC1 {ECO:0000312|EMBL:BAA77624.1}

Function Essential for spermatogenesis and male fertility (By similarity). May play an important role in sperm head and tail formation (By similarity). May act as a tumor suppressor by inhibiting cell proliferation.

Cellular Location

Cytoplasm

Tissue Location

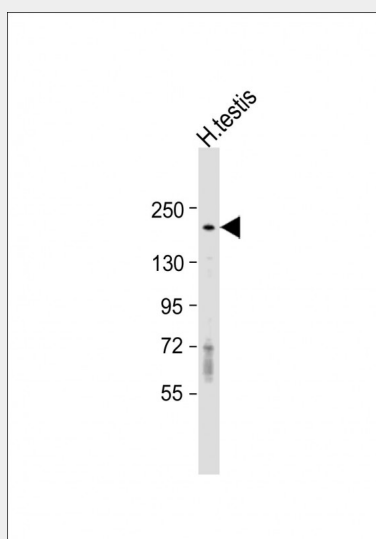
Expressed in all tissues examined. Expression is highest in prostate and testis.

DLEC1 Antibody (Center) - Protocols

Provided below are standard protocols that you may find useful for product applications.

- [Western Blot](#)
- [Blocking Peptides](#)
- [Dot Blot](#)
- [Immunohistochemistry](#)
- [Immunofluorescence](#)
- [Immunoprecipitation](#)
- [Flow Cytometry](#)
- [Cell Culture](#)

DLEC1 Antibody (Center) - Images



Anti-DLEC1 Antibody (Center) at 1:1000 dilution + human testis lysate Lysates/proteins at 20 µg per lane. Secondary Goat Anti-Rabbit IgG, (H+L), Peroxidase conjugated at 1/10000 dilution. Predicted band size : 196 kDa Blocking/Dilution buffer: 5% NFDM/TBST.

DLEC1 Antibody (Center) - Background

This gene contains 37 exons, spans approximately 59-kb, and is located in the 3p22-p21.3 chromosomal segment that is commonly deleted in various carcinomas. Several alternatively spliced transcripts have been observed that contain disrupted coding regions and likely encode nonfunctional proteins. Aberrant transcription of this gene may be involved in carcinogenesis of the

lung, esophagus, and kidney.

DLEC1 Antibody (Center) - References

Zhang, Q., et al. J. Urol. 184(2):731-737(2010)
Zhang, Y., et al. Clin Lung Cancer 11(4):264-270(2010)
Rose, J.E., et al. Mol. Med. 16 (7-8), 247-253 (2010) :
Al Sarakbi, W., et al. Anticancer Res. 30(4):1079-1082(2010)
Canova, C., et al. Cancer Res. 69(7):2956-2965(2009)