

Erythropoietin Antibody (C-term)
Purified Rabbit Polyclonal Antibody (Pab)
Catalog # AP17987b**Specification**

Erythropoietin Antibody (C-term) - Product Information

Application	WB,E
Primary Accession	P01588
Other Accession	P29676 , P07865 , NP_000790
Reactivity	Human
Predicted	Monkey, Rat
Host	Rabbit
Clonality	Polyclonal
Isotype	Rabbit IgG
Calculated MW	30-35K KDa
Antigen Region	155-184

Erythropoietin Antibody (C-term) - Additional Information**Gene ID** 2056**Other Names**

Erythropoietin, Epoetin, EPO

Target/Specificity

This Erythropoietin antibody is generated from rabbits immunized with a KLH conjugated synthetic peptide between 155-184 amino acids from the C-terminal region of human Erythropoietin.

Dilution

WB~~1:1000

E~~Use at an assay dependent concentration.

Format

Purified polyclonal antibody supplied in PBS with 0.09% (W/V) sodium azide. This antibody is prepared by Saturated Ammonium Sulfate (SAS) precipitation followed by dialysis against PBS.

Storage

Maintain refrigerated at 2-8°C for up to 2 weeks. For long term storage store at -20°C in small aliquots to prevent freeze-thaw cycles.

Precautions

Erythropoietin Antibody (C-term) is for research use only and not for use in diagnostic or therapeutic procedures.

Erythropoietin Antibody (C-term) - Protein Information**Name** EPO

Function Hormone involved in the regulation of erythrocyte proliferation and differentiation and the maintenance of a physiological level of circulating erythrocyte mass (PubMed:[28283061](#)). Binds to EPOR leading to EPOR dimerization and JAK2 activation thereby activating specific downstream effectors, including STAT1 and STAT3 (PubMed:[9774108](#)).

Cellular Location

Secreted.

Tissue Location

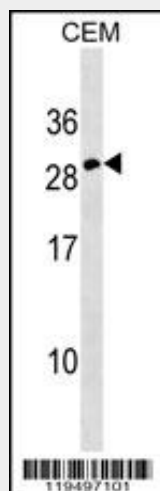
Produced by kidney or liver of adult mammals and by liver of fetal or neonatal mammals.

Erythropoietin Antibody (C-term) - Protocols

Provided below are standard protocols that you may find useful for product applications.

- [Western Blot](#)
- [Blocking Peptides](#)
- [Dot Blot](#)
- [Immunohistochemistry](#)
- [Immunofluorescence](#)
- [Immunoprecipitation](#)
- [Flow Cytometry](#)
- [Cell Culture](#)

Erythropoietin Antibody (C-term) - Images



Erythropoietin Antibody (C-term) (Cat. #AP17987b) western blot analysis in CEM cell line lysates (35ug/lane). This demonstrates the Erythropoietin antibody detected the Erythropoietin protein (arrow).

Erythropoietin Antibody (C-term) - Background

This gene is a member of the EPO/TPO family and encodes a secreted, glycosylated cytokine composed of four alpha helical bundles. The protein is found in the plasma and regulates red cell production by promoting erythroid differentiation and initiating hemoglobin synthesis. This protein also has neuroprotective activity against a variety of potential brain injuries and antiapoptotic functions in several tissue types. [provided by

RefSeq].

Erythropoietin Antibody (C-term) - References

Bailey, S.D., et al. Diabetes Care 33(10):2250-2253(2010)
Kristensen, P.L., et al. Eur. J. Endocrinol. 163(3):391-398(2010)
Kim, M.H., et al. Mol. Biol. (Mosk.) 44(4):656-663(2010)
Carraway, M.S., et al. Circ. Res. 106(11):1722-1730(2010)
Shi, Z., et al. Mol. Cancer Res. 8(4):615-626(2010)