

**RIP140 Antibody (Center)**  
**Affinity Purified Rabbit Polyclonal Antibody (Pab)**  
**Catalog # AP17991c****Specification**

---

**RIP140 Antibody (Center) - Product Information**

Application	WB,E
Primary Accession	<a href="#">P48552</a>
Other Accession	<a href="#">NP_003480.2</a>
Reactivity	Human
Host	Rabbit
Clonality	Polyclonal
Isotype	Rabbit IgG
Calculated MW	126942
Antigen Region	586-613

**RIP140 Antibody (Center) - Additional Information****Gene ID** 8204**Other Names**

Nuclear receptor-interacting protein 1, Nuclear factor RIP140, Receptor-interacting protein 140, NRIP1

**Target/Specificity**

This RIP140 antibody is generated from rabbits immunized with a KLH conjugated synthetic peptide between 586-613 amino acids from the Central region of human RIP140.

**Dilution**

WB~~1:1000

E~~Use at an assay dependent concentration.

**Format**

Purified polyclonal antibody supplied in PBS with 0.09% (W/V) sodium azide. This antibody is purified through a protein A column, followed by peptide affinity purification.

**Storage**

Maintain refrigerated at 2-8°C for up to 2 weeks. For long term storage store at -20°C in small aliquots to prevent freeze-thaw cycles.

**Precautions**

RIP140 Antibody (Center) is for research use only and not for use in diagnostic or therapeutic procedures.

**RIP140 Antibody (Center) - Protein Information****Name** NRIP1

**Function** Modulates transcriptional activation by steroid receptors such as NR3C1, NR3C2 and ESR1. Also modulates transcriptional repression by nuclear hormone receptors. Positive regulator of the circadian clock gene expression: stimulates transcription of BMAL1, CLOCK and CRY1 by acting as a coactivator for RORA and RORC. Involved in the regulation of ovarian function (By similarity). Plays a role in renal development (PubMed:[28381549](#)).

#### Cellular Location

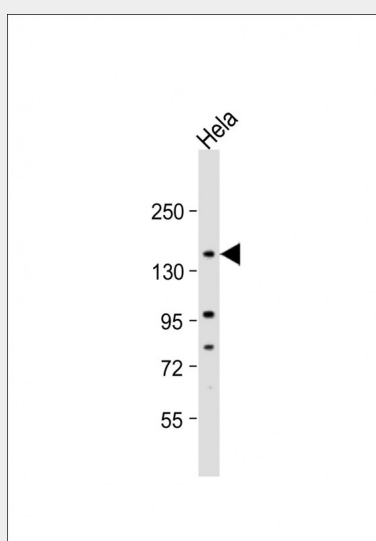
Nucleus. Note=Localized to discrete foci and redistributes to larger nuclear domains upon binding to ligand-bound NR3C1

### RIP140 Antibody (Center) - Protocols

Provided below are standard protocols that you may find useful for product applications.

- [Western Blot](#)
- [Blocking Peptides](#)
- [Dot Blot](#)
- [Immunohistochemistry](#)
- [Immunofluorescence](#)
- [Immunoprecipitation](#)
- [Flow Cytometry](#)
- [Cell Culture](#)

### RIP140 Antibody (Center) - Images



Anti-RIP140 Antibody (Center) at 1:1000 dilution + HeLa whole cell lysate Lysates/proteins at 20 µg per lane. Secondary Goat Anti-Rabbit IgG, (H+L), Peroxidase conjugated at 1/10000 dilution. Predicted band size : 127 kDa Blocking/Dilution buffer: 5% NFDM/TBST.

### RIP140 Antibody (Center) - Background

Nuclear receptor interacting protein 1 (NRIP1) is a nuclear protein that specifically interacts with the hormone-dependent activation domain AF2 of nuclear receptors. Also known as RIP140, this protein modulates transcriptional activity of the estrogen receptor.

**RIP140 Antibody (Center) - References**

Liu, C.Y., et al. Carcinogenesis 31(7):1259-1263(2010)  
Rose, J.E., et al. Mol. Med. 16 (7-8), 247-253 (2010) :  
Docquier, A., et al. Clin. Cancer Res. 16(11):2959-2970(2010)  
Fritah, A., et al. Cardiovasc. Res. 86(3):443-451(2010)  
Suzuki, A., et al. J. Biol. Chem. 285(18):13444-13453(2010)