

**FANCA Antibody (Center)**  
**Affinity Purified Rabbit Polyclonal Antibody (Pab)**  
**Catalog # AP18008C****Specification**

---

**FANCA Antibody (Center) - Product Information**

Application	WB,E
Primary Accession	<a href="#">O15360</a>
Other Accession	<a href="#">NP_000126.2</a>
Reactivity	Human
Host	Rabbit
Clonality	Polyclonal
Isotype	Rabbit IgG
Calculated MW	162775
Antigen Region	667-694

**FANCA Antibody (Center) - Additional Information****Gene ID** 2175**Other Names**

Fanconi anemia group A protein, Protein FACA, FANCA, FAA, FACA, FANCH

**Target/Specificity**

This FANCA antibody is generated from rabbits immunized with a KLH conjugated synthetic peptide between 667-694 amino acids from the Central region of human FANCA.

**Dilution**

WB~~1:1000

E~~Use at an assay dependent concentration.

**Format**

Purified polyclonal antibody supplied in PBS with 0.09% (W/V) sodium azide. This antibody is purified through a protein A column, followed by peptide affinity purification.

**Storage**

Maintain refrigerated at 2-8°C for up to 2 weeks. For long term storage store at -20°C in small aliquots to prevent freeze-thaw cycles.

**Precautions**

FANCA Antibody (Center) is for research use only and not for use in diagnostic or therapeutic procedures.

**FANCA Antibody (Center) - Protein Information****Name** FANCA**Synonyms** FAA, FACA, FANCH

**Function** DNA repair protein that may operate in a postreplication repair or a cell cycle checkpoint function. May be involved in interstrand DNA cross-link repair and in the maintenance of normal chromosome stability.

**Cellular Location**

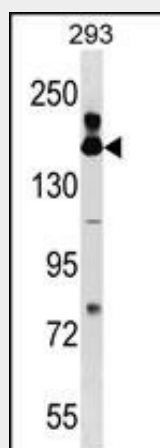
Nucleus. Cytoplasm. Note=The major form is nuclear. The minor form is cytoplasmic

**FANCA Antibody (Center) - Protocols**

Provided below are standard protocols that you may find useful for product applications.

- [Western Blot](#)
- [Blocking Peptides](#)
- [Dot Blot](#)
- [Immunohistochemistry](#)
- [Immunofluorescence](#)
- [Immunoprecipitation](#)
- [Flow Cytometry](#)
- [Cell Culture](#)

**FANCA Antibody (Center) - Images**



FANCA Antibody (Center) (Cat. #AP18008c) western blot analysis in 293 cell line lysates (35ug/lane). This demonstrates the FANCA antibody detected the FANCA protein (arrow).

**FANCA Antibody (Center) - Background**

The Fanconi anemia complementation group (FANC) currently includes FANCA, FANCB, FANCC, FANCD1 (also called BRCA2), FANCD2, FANCE, FANCF, FANCG, FANCI, FANCI (also called BRIP1), FANCL, FANCM and FANCN (also called PALB2). The previously defined group FANCH is the same as FANCA. Fanconi anemia is a genetically heterogeneous recessive disorder characterized by cytogenetic instability, hypersensitivity to DNA crosslinking agents, increased chromosomal breakage, and defective DNA repair. The members of the Fanconi anemia complementation group do not share sequence similarity; they are related by their assembly into a common nuclear protein complex. This gene encodes the protein for complementation group A. Alternative splicing results in multiple transcript variants encoding different isoforms. Mutations in this gene are the most

common cause of Fanconi anemia.

#### **FANCA Antibody (Center) - References**

Bailey, S.D., et al. Diabetes Care 33(10):2250-2253(2010)  
Liu, C.Y., et al. Carcinogenesis 31(7):1259-1263(2010)  
Monsees, G.M., et al. Breast Cancer Res. Treat. (2010) In press :  
Eriksson, N., et al. PLoS Genet. 6 (6), E1000993 (2010) :  
Talmud, P.J., et al. Am. J. Hum. Genet. 85(5):628-642(2009)