

FBLN5 Antibody (C-term)
Affinity Purified Rabbit Polyclonal Antibody (Pab)
Catalog # AP18010b

Specification

FBLN5 Antibody (C-term) - Product Information

Application	WB,E
Primary Accession	O9UBX5
Other Accession	NP_006320.2
Reactivity	Human
Host	Rabbit
Clonality	Polyclonal
Isotype	Rabbit IgG
Calculated MW	50180
Antigen Region	393-421

FBLN5 Antibody (C-term) - Additional Information

Gene ID 10516

Other Names

Fibulin-5, FIBL-5, Developmental arteries and neural crest EGF-like protein, Dance, Urine p50 protein, UP50, FBLN5, DANCE

Target/Specificity

This FBLN5 antibody is generated from rabbits immunized with a KLH conjugated synthetic peptide between 393-421 amino acids from the C-terminal region of human FBLN5.

Dilution

WB~~1:1000

E~~Use at an assay dependent concentration.

Format

Purified polyclonal antibody supplied in PBS with 0.09% (W/V) sodium azide. This antibody is purified through a protein A column, followed by peptide affinity purification.

Storage

Maintain refrigerated at 2-8°C for up to 2 weeks. For long term storage store at -20°C in small aliquots to prevent freeze-thaw cycles.

Precautions

FBLN5 Antibody (C-term) is for research use only and not for use in diagnostic or therapeutic procedures.

FBLN5 Antibody (C-term) - Protein Information

Name FBLN5

Synonyms DANCE

Function Essential for elastic fiber formation, is involved in the assembly of continuous elastin (ELN) polymer and promotes the interaction of microfibrils and ELN (PubMed:[18185537](#)). Stabilizes and organizes elastic fibers in the skin, lung and vasculature (By similarity). Promotes adhesion of endothelial cells through interaction of integrins and the RGD motif. Vascular ligand for integrin receptors which may play a role in vascular development and remodeling (PubMed:[10428823](#)). May act as an adapter that mediates the interaction between FBN1 and ELN (PubMed:[17255108](#)).

Cellular Location

Secreted. Secreted, extracellular space, extracellular matrix. Note=co-localizes with ELN in elastic fibers.

Tissue Location

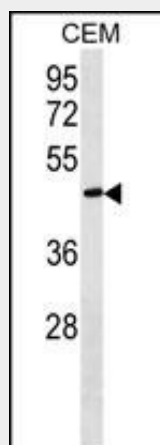
Expressed in skin fibroblasts (at protein level) (PubMed:17035250). Expressed predominantly in heart, ovary, and colon but also in kidney, pancreas, testis, lung and placenta. Not detectable in brain, liver, thymus, prostate, or peripheral blood leukocytes (PubMed:10428823).

FBLN5 Antibody (C-term) - Protocols

Provided below are standard protocols that you may find useful for product applications.

- [Western Blot](#)
- [Blocking Peptides](#)
- [Dot Blot](#)
- [Immunohistochemistry](#)
- [Immunofluorescence](#)
- [Immunoprecipitation](#)
- [Flow Cytometry](#)
- [Cell Culture](#)

FBLN5 Antibody (C-term) - Images



FBLN5 Antibody (C-term) (Cat. #AP18010b) western blot analysis in CEM cell line lysates (35ug/lane). This demonstrates the FBLN5 antibody detected the FBLN5 protein (arrow).

FBLN5 Antibody (C-term) - Background

The protein encoded by this gene is a secreted, extracellular matrix protein containing an Arg-Gly-Asp (RGD) motif

and calcium-binding EGF-like domains. It promotes adhesion of endothelial cells through interaction of integrins and the RGD motif. It is prominently expressed in developing arteries but less so in adult vessels. However, its expression is reinduced in balloon-injured vessels and atherosclerotic lesions, notably in intimal vascular smooth muscle cells and endothelial cells. Therefore, the protein encoded by this gene may play a role in vascular development and remodeling. Defects in this gene are a cause of autosomal dominant cutis laxa, autosomal recessive cutis laxa type I (CL type I), and age-related macular degeneration type 3 (ARMD3).

FBLN5 Antibody (C-term) - References

Schneider, R., et al. J. Mol. Biol. 401(4):605-617(2010)
Zhou, S., et al. Biochem. Biophys. Res. Commun. 398(2):247-253(2010)
Rose, J.E., et al. Mol. Med. 16 (7-8), 247-253 (2010) :
Joslyn, G., et al. Alcohol. Clin. Exp. Res. 34(5):800-812(2010)
Zhao, J., et al. BMC Med. Genet. 11, 96 (2010) :