

FEZF2 Antibody (Center)
Affinity Purified Rabbit Polyclonal Antibody (Pab)
Catalog # AP18011c**Specification**

FEZF2 Antibody (Center) - Product Information

Application	WB,E
Primary Accession	Q8TBJ5
Other Accession	NP_060478.3
Reactivity	Human
Host	Rabbit
Clonality	Polyclonal
Isotype	Rabbit IgG
Calculated MW	48811
Antigen Region	209-237

FEZF2 Antibody (Center) - Additional Information**Gene ID** 55079**Other Names**

Fez family zinc finger protein 2, Forebrain embryonic zinc finger-like protein 2, Zinc finger protein 312, Zinc finger protein Fez-like, FEZF2, FEZL, ZNF312

Target/Specificity

This FEZF2 antibody is generated from rabbits immunized with a KLH conjugated synthetic peptide between 209-237 amino acids from the Central region of human FEZF2.

Dilution

WB~~1:1000

E~~Use at an assay dependent concentration.

Format

Purified polyclonal antibody supplied in PBS with 0.09% (W/V) sodium azide. This antibody is purified through a protein A column, followed by peptide affinity purification.

Storage

Maintain refrigerated at 2-8°C for up to 2 weeks. For long term storage store at -20°C in small aliquots to prevent freeze-thaw cycles.

Precautions

FEZF2 Antibody (Center) is for research use only and not for use in diagnostic or therapeutic procedures.

FEZF2 Antibody (Center) - Protein Information**Name** FEZF2

Synonyms FEZL, ZNF312

Function Transcription repressor. Required for the specification of corticospinal motor neurons and other subcerebral projection neurons. May play a role in layer and neuronal subtype-specific patterning of subcortical projections and axonal fasciculation. Controls the development of dendritic arborization and spines of large layer V pyramidal neurons. May be involved in innate immunity (By similarity).

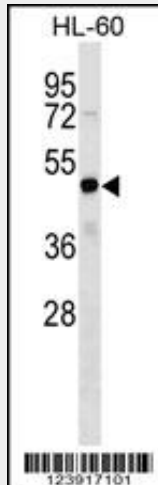
Cellular Location

Nucleus.

FEZF2 Antibody (Center) - Protocols

Provided below are standard protocols that you may find useful for product applications.

- [Western Blot](#)
- [Blocking Peptides](#)
- [Dot Blot](#)
- [Immunohistochemistry](#)
- [Immunofluorescence](#)
- [Immunoprecipitation](#)
- [Flow Cytometry](#)
- [Cell Culture](#)

FEZF2 Antibody (Center) - Images

FEZF2 Antibody (Center) (Cat. #AP18011c) western blot analysis in HL-60 cell line lysates (35ug/lane). This demonstrates the FEZF2 antibody detected the FEZF2 protein (arrow).

FEZF2 Antibody (Center) - Background

Transcription repressor. Required for the specification of corticospinal motor neurons and other subcerebral projection neurons. May play a role in layer and neuronal subtype-specific patterning of subcortical projections and axonal fasciculation. Controls the development of dendritic arborization and spines of large layer V pyramidal neurons. May be involved in innate immunity (By similarity).

FEZF2 Antibody (Center) - References

Hashimoto, H., et al. Mech. Dev. 97 (1-2), 191-195 (2000) :

Kleiderlein, J.J., et al. Hum. Genet. 103(6):666-673(1998)