

FCHO2 Antibody (Center)
Affinity Purified Rabbit Polyclonal Antibody (Pab)
Catalog # AP18034c**Specification**

FCHO2 Antibody (Center) - Product Information

Application	WB,E
Primary Accession	Q0JRZ9
Other Accession	Q3UQN2 , NP_620137.2
Reactivity	Human, Mouse
Host	Rabbit
Clonality	Polyclonal
Isotype	Rabbit IgG
Calculated MW	88924
Antigen Region	137-165

FCHO2 Antibody (Center) - Additional Information**Gene ID** 115548**Other Names**

FCH domain only protein 2, FCHO2

Target/Specificity

This FCHO2 antibody is generated from rabbits immunized with a KLH conjugated synthetic peptide between 137-165 amino acids from the Central region of human FCHO2.

Dilution

WB~~1:1000

Format

Purified polyclonal antibody supplied in PBS with 0.09% (W/V) sodium azide. This antibody is purified through a protein A column, followed by peptide affinity purification.

Storage

Maintain refrigerated at 2-8°C for up to 2 weeks. For long term storage store at -20°C in small aliquots to prevent freeze-thaw cycles.

Precautions

FCHO2 Antibody (Center) is for research use only and not for use in diagnostic or therapeutic procedures.

FCHO2 Antibody (Center) - Protein Information**Name** FCHO2

Function Functions in an early step of clathrin-mediated endocytosis. Has both a membrane binding/bending activity and the ability to recruit proteins essential to the formation of functional

clathrin-coated pits. Has a lipid-binding activity with a preference for membranes enriched in phosphatidylserine and phosphoinositides (Pi(4,5) biphosphate) like the plasma membrane. Its membrane-bending activity might be important for the subsequent action of clathrin and adaptors in the formation of clathrin-coated vesicles. Involved in adaptor protein complex AP-2- dependent endocytosis of the transferrin receptor, it also functions in the AP-2-independent endocytosis of the LDL receptor.

Cellular Location

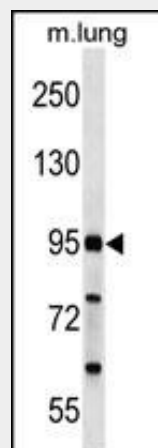
Membrane, clathrin-coated pit; Peripheral membrane protein; Cytoplasmic side. Note=Associated with forming but not mature clathrin- coated vesicles. The recruitment to coated-pits precede the one of clathrin and the adaptor protein complex AP-2 (By similarity)

FCHO2 Antibody (Center) - Protocols

Provided below are standard protocols that you may find useful for product applications.

- [Western Blot](#)
- [Blocking Peptides](#)
- [Dot Blot](#)
- [Immunohistochemistry](#)
- [Immunofluorescence](#)
- [Immunoprecipitation](#)
- [Flow Cytometry](#)
- [Cell Culture](#)

FCHO2 Antibody (Center) - Images



FCHO2 Antibody (Center) (Cat. #AP18034c) western blot analysis in mouse lung tissue lysates (35ug/lane). This demonstrates the FCHO2 antibody detected the FCHO2 protein (arrow).

FCHO2 Antibody (Center) - Background

FCHO2 may play a role in membrane remodeling by imposing and stabilizing particular membrane curvatures.

FCHO2 Antibody (Center) - References

Henne, W.M., et al. Structure 15(7):839-852(2007)
Katoh, M., et al. Int. J. Mol. Med. 14(2):327-331(2004)