

TRAM1L1 Antibody (C-term)
Affinity Purified Rabbit Polyclonal Antibody (Pab)
Catalog # AP18041B

Specification

TRAM1L1 Antibody (C-term) - Product Information

Application	WB,E
Primary Accession	O8N609
Other Accession	NP_689615.2
Reactivity	Human
Host	Rabbit
Clonality	Polyclonal
Isotype	Rabbit IgG
Calculated MW	42162
Antigen Region	325-353

TRAM1L1 Antibody (C-term) - Additional Information

Gene ID 133022

Other Names

Translocating chain-associated membrane protein 1-like 1, TRAM1L1

Target/Specificity

This TRAM1L1 antibody is generated from rabbits immunized with a KLH conjugated synthetic peptide between 325-353 amino acids from the C-terminal region of human TRAM1L1.

Dilution

WB~~1:1000

E~~Use at an assay dependent concentration.

Format

Purified polyclonal antibody supplied in PBS with 0.09% (W/V) sodium azide. This antibody is purified through a protein A column, followed by peptide affinity purification.

Storage

Maintain refrigerated at 2-8°C for up to 2 weeks. For long term storage store at -20°C in small aliquots to prevent freeze-thaw cycles.

Precautions

TRAM1L1 Antibody (C-term) is for research use only and not for use in diagnostic or therapeutic procedures.

TRAM1L1 Antibody (C-term) - Protein Information

Name TRAM1L1

Function Stimulatory or required for the translocation of secretory proteins across the ER

membrane.

Cellular Location

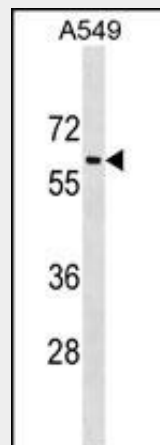
Endoplasmic reticulum membrane; Multi-pass membrane protein

TRAM1L1 Antibody (C-term) - Protocols

Provided below are standard protocols that you may find useful for product applications.

- [Western Blot](#)
- [Blocking Peptides](#)
- [Dot Blot](#)
- [Immunohistochemistry](#)
- [Immunofluorescence](#)
- [Immunoprecipitation](#)
- [Flow Cytometry](#)
- [Cell Culture](#)

TRAM1L1 Antibody (C-term) - Images



TRAM1L1 Antibody (C-term) (Cat. #AP18041b) western blot analysis in A549 cell line lysates (35ug/lane). This demonstrates the TRAM1L1 antibody detected the TRAM1L1 protein (arrow).

TRAM1L1 Antibody (C-term) - Background

Stimulatory or required for the translocation of secretory proteins across the ER membrane (By similarity).

TRAM1L1 Antibody (C-term) - References

- Kalsi, G., et al. Hum. Mol. Genet. 19(12):2497-2506(2010)
Cotsapas, C., et al. Hum. Mol. Genet. 18(18):3502-3507(2009)
Marroni, F., et al. Circ Cardiovasc Genet 2(4):322-328(2009)
Stefanovic, B., et al. Mol. Cell. Biol. 24(4):1758-1768(2004)